

4

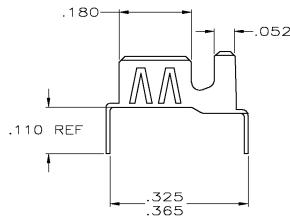
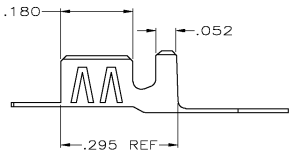
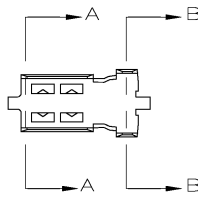
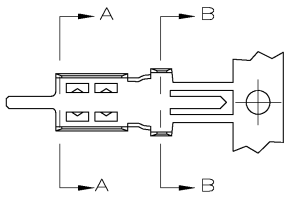
3

2

1

THIS DRAWING IS UNPUBLISHED. RELEASED FOR PUBLICATION
 BY TYCO ELECTRONICS CORPORATION. ALL RIGHTS RESERVED.

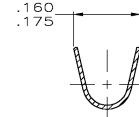
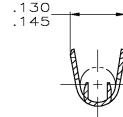
LOC	DIST	REVISIONS			
P	LTR	DESCRIPTION	DATE	OWN	APPD
AJ	16	N	RELEASE PER 0514-0202-04	17MAY04	JDP/JL



VIEW C

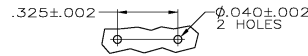
VIEW D

- ACCEPTS COAX CABLE WITH .095-.110 O.D. JACKETS AND .055-.065 DIELECTRIC O.D.
EXAMPLE: RG-174 AND RG-316
- TIN PLATE PER ASTM-B-545.
- INSTRUCTION SHEET NO.: 408-2472-2.
- ON STRIP
- ON STRIP, LEGS MUST BE BENT MANUALLY AFTER CRIMPING.
- LOOSE PIECE PARTS WITH PREFORMED LEGS.
- BRASS PER ASTM-B-36.
- TIN-LEAD PLATE PER ASTM-B-545.

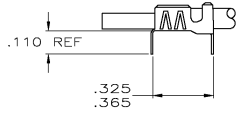


SECTION A-A

SECTION B-B



PCB LAYOUT



AS APPLIED BY APPLICATOR

VIEW E



AS APPLIED BY APPLICATOR

VIEW F

FINISH	VIEW	TYPE	PART NUMBER
△	D	△	9-226176-2
△	C&F	△	9-226176-1
△	C&E	△	9-226176-0
△	D	△	226176-4
△	C&F	△	226176-3
△	C&E	△	226176-2

THIS DRAWING IS A CONTROLLED DOCUMENT.		DRN M. OBRINE	30JUN99	Tyco Electronics Corporation Harrisburg, Pa 17105-3608
DIMENSIONS: INCHES		CHK M. OBRINE	30JUN99	
TOLERANCES UNLESS OTHERWISE SPECIFIED:		APPD CABARLO	30JUN99	PRODUCT SPEC APPLICATION SPEC BRAID-PIC P.C. BOARD GROUND TERMINAL SINGLE CRIMP-SINGLE CONTACT
MATERIAL: SEE NOTE 7		WEIGHT .007 OZ	SIZE A2	DRAWING NO 00779 226176
ANGLES: SEE TABLE		CUSTOMER DRAWING		RESTRICTED TO SCALE 6:1 SHEET 1 of 1 REV N

226176

A