

4

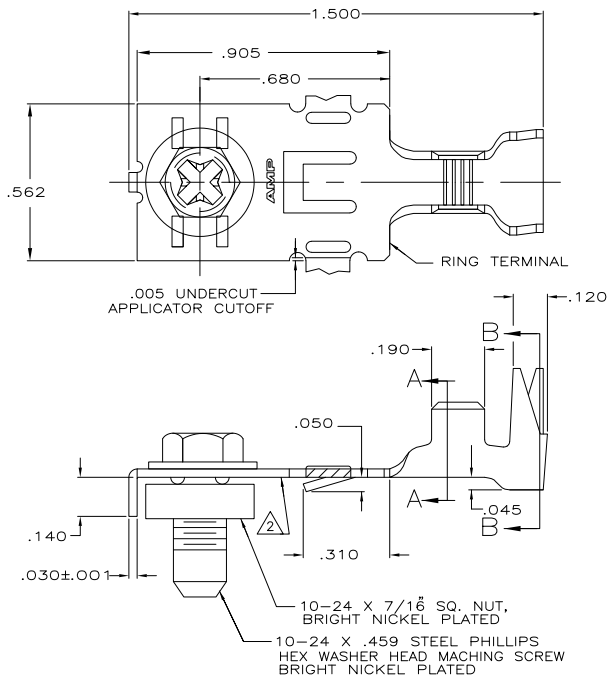
3

2

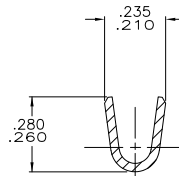
1

THIS DRAWING IS UNPUBLISHED. RELEASED FOR PUBLICATION  
 © COPYRIGHT BY TYCO ELECTRONICS CORPORATION. ALL RIGHTS RESERVED.

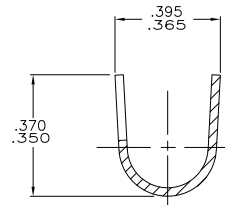
LOC		DIBT		REVISIONS			
P	LR	DATE	BY	APP'D			
AF	50	L1	REVISED PER ECR-07-026326	06NOV07	HMR	DD	



- 1 CONTINUOUS STRIP ON REELS
- 2 VERTICAL BURRS NOT TO EXCEED .005 ALONG THIS EDGE
- 3 BACK OUT TORQUE OF SCREW TO BE A MIN OF 5 IN LBS AND A MAX OF 25 IN LBS



SECTION A-A



SECTION B-B

F	OR	O	.350	.250	F	.180	.136	2/12 <sup>S</sup>
							.127	10
							.113	12
							.104	14
							.099	16
TYPE	WIDTH	STRIP LENGTH ±.015	TYPE	WIDTH	±.002 HEIGHT	WIRE		
INSUL BARREL CRIMP			WIRE BARREL CRIMP					

.220-.310 OR 2(170 <sup>S</sup> )	16-10 OR 2 (12 <sup>S</sup> )	520936-1
INSULATION RANGE	WIRE RANGE	PART NUMBER
THIS DRAWING IS A CONTROLLED DOCUMENT. M.S. FEHR 260CT2007 D.K. DECKER 260CT2007 D.F. DECKER 260CT2007 PRODUCT SPEC 108-1191 APPLICATION SPEC 114-2087 HEIGHT - MATERIAL #2 HARD BRASS RING TERMINAL FINISH NO FINISH RING TERMINAL		
Tyco Electronics Corporation Harrisburg, PA 17105-3608 SUB-ASSEMBLY, POWER RING		
SIZE	CAGE CODE	DRAWING NO
A2	00779	C=520936
CUSTOMER DRAWING	SCALE	4:1
SHEET	1 of 1	REV L1

AMP 1471-9 REV 31MM2000

520936

A