

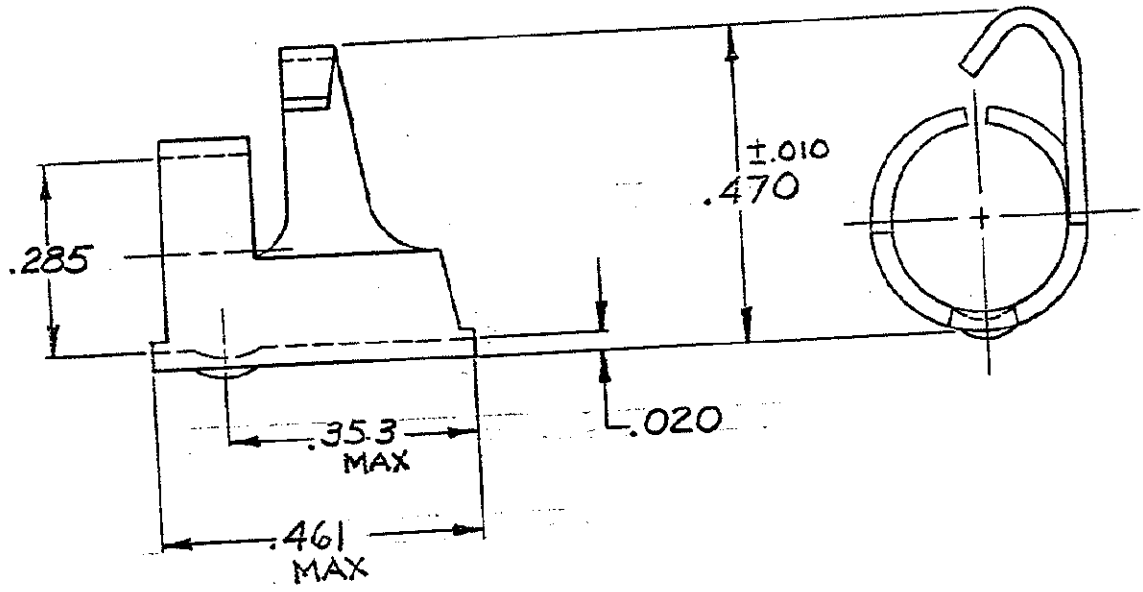
LOC **G** PRINT DIS **14** **A**

DRAWING MADE IN AMERICAN PROJECTION

© 1947 BY AMP INCORPORATED. ALL RIGHTS RESERVED. AMP PRODUCTS COVERED BY PATENTS AND/OR PATENTS PENDING.

REVISIONS			
LTR	DESCRIPTION	DATE	APPROVED
A	REDRAWN W/O CHANGE	2-15-73	<i>me</i>
B	REV / G-5866	LO 4/92	<i>me</i>
C	REV / 0720-0091-93	LO 6/93	<i>me</i>

34481



8-34481-1	LOOSE PC, BOX	100
34481	LOOSE PC	-
PART NO	PACKAGE TYPE	QTY

UNLESS OTHERWISE SPECIFIED DIMENSIONS ARE IN INCHES
TOLERANCES ON:
DECIMALS ± .008
ANGLES ± 5°

MATERIAL
BRASS

CONTRACT NO.	— # —
DR	<i>M Ensminger</i> 2-15-73
CHK	<i>Harry Barb</i> 2-15-73
APPD	<i>Abel</i> 2-16-73
REL	<i>Harry Barb</i> 2-16-73
DSGN APPD	
OTHER APPD	



AMP INCORPORATED
HARRISBURG, PENNSYLVANIA

NAME WIRE TERMINAL DISTRIBUTOR CAP		
SIZE A	CODE IDENT NO. 00779	NUMBER 34481
SCALE 4:1	SHEET 1 OF 1	