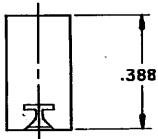
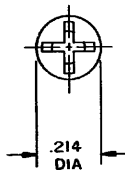


DRAWING MADE IN THIRD ANGLE PROJECTION

© COPYRIGHT 1980 BY AMP INCORPORATED, HARRISBURG, PA.
 ALL INTERNATIONAL RIGHTS RESERVED. AMP INCORPORATED PRODUCTS
 COVERED BY U. S. AND FOREIGN PATENTS AND/OR PATENTS PENDING.

REVISONS		DATE	APPROVED
1	LOC AA	DIS ¹ CG/2	
P	ZONE	LTR	DESCRIPTION
AP	A		REVERPER ECN AA-2461
		8/2/83	SD

D
C
A
WAS 1222-80-17-1



I. ALL DIMENSIONS ARE FOR REFERENCE ONLY
 UNLESS OTHERWISE SPECIFIED.

553595-1 AS SHOWN

UNLESS OTHERWISE SPECIFIED DIMENSIONS ARE IN INCHES. DECIMALS: ANGLES: 2		CONTRACT NO. DIR <i>R. Shuman</i> 7-15-82 CIR <i>M. L. ...</i> 7-19-82	AMP INCORPORATED Harrisburg, Pa.	
MATERIAL NYLON (NATURAL)	FINISH	NAME <i>Cap Stuffer</i>	CAP, STUFFER, .156 DIA	
APPR <i>R. Shuman</i> DSGR APPD <i>R. Shuman</i> OTHER APPD	SIZE B	CODE IDENT NO 00779	DRAWING NO 553595	
SCALE 4:1		SHEET 1 OF 1		

CUSTOMER DRAWING

AMP 1470-15 (7-73)