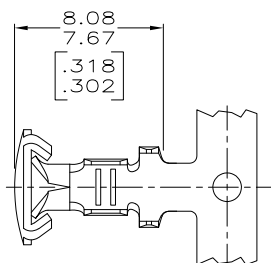


DRAWING MADE IN THIRD ANGLE PROJECTION

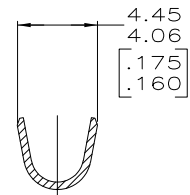
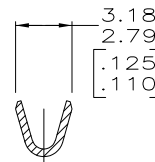
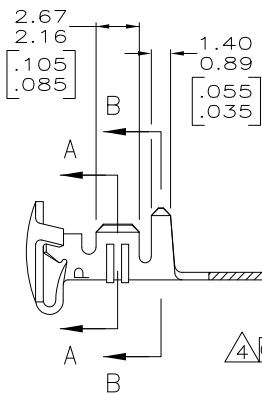
THIS DRAWING IS UNPUBLISHED. RELEASED FOR PUBLICATION .19
 © COPYRIGHT 19 BY AMP INCORPORATED. ALL INTERNATIONAL RIGHTS RESERVED.

LOC	DIST	REVISIONS				
P	F	ZONE	LTR	DESCRIPTION	DATE	APPD
AF	50		H	REV PER 0710-0427-95	27/SEP/95	PF DS
			H1	REV PER ECO-09-020932	07SEP09	AEG



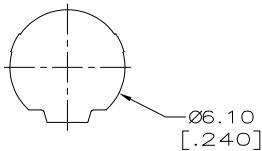
1. WIRE RANGE: 0.5 - 1.4 mm² [20 - 16 AWG].
2. INSULATION RANGE: 2.29 - 3.18 [.090 - .125] DIA.
3. DIMENSION IN BRACKETS ARE IN INCHES.

⚠️ OBSOLETE PARTS: OBSOLETE CIS STREAMLINING PER D.RENAUD/D.SINIS



SECTION A-A

SECTION B-B



⚠️ OBSOLETE

METRIC

THIS DRAWING IS A CONTROLLED DOCUMENT FOR AMP INCORPORATED. IT IS SUBJECT TO CHANGE AND THE CONTROLLING ENGINEERING ORGANIZATION SHOULD BE CONTACTED FOR THE LATEST REVISION.

MINI	-	505034-3
MINI	PRE TIN	505034-2
STANDARD	PRE TIN	505034-1
APPLICATOR TYPE	FINISH	PART NO
DO NOT SCALE PRINT. UNLESS SPECIFIED DIMENSIONS IN mm [INCHES] TOLERANCES ON: 2. PLC DEC ± 0.13 [.005] 3. PLC DEC ± - ANGLES ± -	DR 2-18-94 T. BECK CHK 2-18-94 R. SWING APPD 4-03-95 R. GRAY PRODUCT SPEC	AMP AMP Incorporated Harrisburg, PA 17105-3608
MATERIAL 0.41 [.016] BRASS	FINISH SEE TABLE	NAME BUTTON CONTACT
SIZE B	CAGE CODE 00779	DRAWING NO C=505034
SCALE 5:1	SHEET 1 OF 1	

AMP 1470-15 REV 3-92 Tronics/021114,145509 (YYMDD.HHMMSS) from
 Compersision, Inc., Medusa Revision 1.2.2.51

CUSTOMER DRAWING