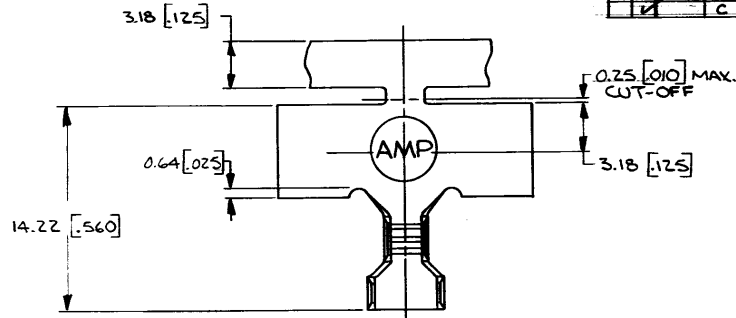


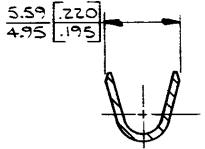
DRAWING MADE IN THIRD ANGLE PROJECTION

THIS DRAWING IS UNPUBLISHED. RELEASED FOR PUBLICATION 19
 © COPYRIGHT 19 BY AMP INCORPORATED, HARRISBURG, PA. ALL INTERNATIONAL RIGHTS RESERVED. AMP PRODUCTS MAY BE COVERED BY U.S. AND FOREIGN PATENTS AND/OR PATENTS PENDING.

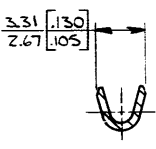
REV. #		ZONE	LTR	DESCRIPTION	DATE	APPROVED
1						
2	A			REV. # REL. AF-0568 / PAR	11-2-84	RLT / GY
3	B			OBS PER AF-2304	4-13-88	724 / GY
4	C			REACTIVATE -1 AF-6801	7/17/90	DKS /



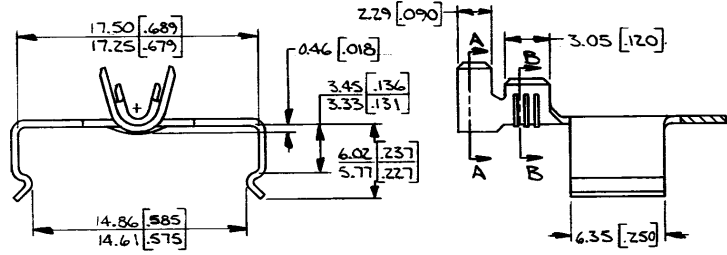
1. DIMENSIONS IN BRACKETS ARE IN INCHES.
2. CONTINUOUS STRIP ON REELS WITH TERMINALS ON 32.51 [1.28] CENTERS.



SECT. A-A



SECT. B-B



1.80-3.20 [071-.126]	03-09mm ² [#22-18]	63361-1
INSULATION RANGE		WIRE RANGE
PART NO		
UNLESS OTHERWISE SPECIFIED DIMENSIONS ARE IN DECIMALS INCHES. TOLERANCES ON: DECIMALS ±.025 [010] ANGLES ±.025 [010]		CONTRACT NO 4-25-84
MATERIAL BRASS [018] THK		APPD S. J. [Signature] 4/30/84 G. [Signature] 4/30/84
FINISH NONE		NAME BRUSH HOLDER CLIP
SIZE B	FSCM NO 00779	DRAWING NO 63361
SCALE #	SHEET	

METRIC

CUSTOMER DRAWING