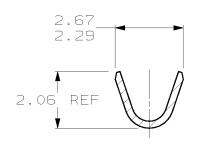
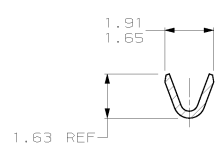
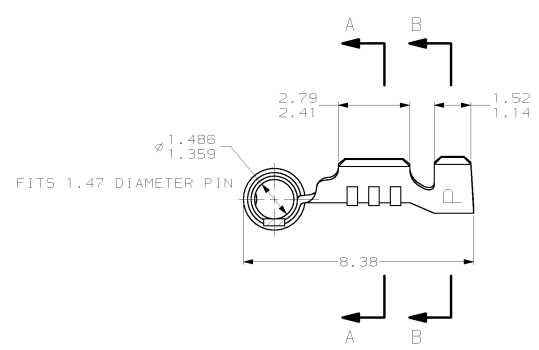
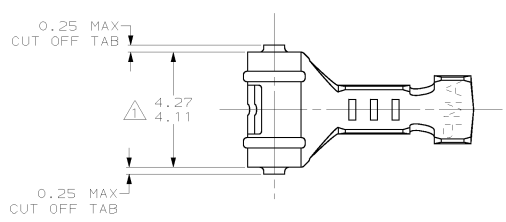


4 3 2 1

THIS DRAWING IS UNCLASSIFIED
 (C) COPYRIGHT IS BY AMP INCORPORATED. ALL RIGHTS RESERVED.

REV	DATE	DESCRIPTION	DATE	BY	APP'D
CM	52				
B		REV B REDWN PER EC 0L30-0125-97	6-12-97	TB	RS

- △ 0.00038 MIN SELECTIVE GOLD PLATING ON INSIDE OF RECEPTACLE OVER NICKEL OVER ALL UNDERPLATE.
- 2. WIRE RANGE: 0.12 - 0.4 MM² (26 - 22 AWG)
- 3. INSULATION RANGE: 0.89 - 1.65



SECTION A-A

SECTION B-B

MM	IN	MM	IN	MM	IN	MM	IN
1.359	.0535	1.91	.075	4.11	.162	-	-
1.14	.045	1.65	.065	2.79	.110	-	-
0.89	.035	1.63	.064	2.67	.105	-	-
0.25	.010	1.52	.060	2.41	.095	-	-
0.13	.005	1.486	.0585	2.29	.090	8.38	.330
0.00038	.000015	1.47	.058	2.06	.081	4.27	.168
MM	IN	MM	IN	MM	IN	MM	IN

CONVERSION TABLE

METRIC

THIS DRAWING IS A CONTROLLED DOCUMENT		DW: T. BECK 6-12-97 CHK: S. SWING 6-12-97 APP: A. BRADY/CK 6-17-97 PRODUCT SPEC: 108-1025 APPLICATION SPEC: 114-1008 REVISION: -	AMP AMP Incorporated Harrisburg, PA 17105-3608 RECEPTACLE, .058 DIAMETER, 26-22 AWG, .035-.065 INSULATION, RIGHT ANGLE, LOOSE PIECE, P.C. CONTACT FILE: 042-000779 C-350189
DIMENSIONS: mm UNITS: mm DECIMALS: 2 ANGLES: 10 TOLERANCES: AS SHOWN	MATERIAL: SEE TABLE FINISH: SEE TABLE	CUSTOMER DRAWING SCALE: 10:1 SHEET: 1 OF 1 REV: B	RESTRICTED TO: -

AMP 1471-9 REV 27/04/96
 12-JUN-97 06:35:14 amp22238 /home/amp22238/junk/redraw.1330

350189