

4

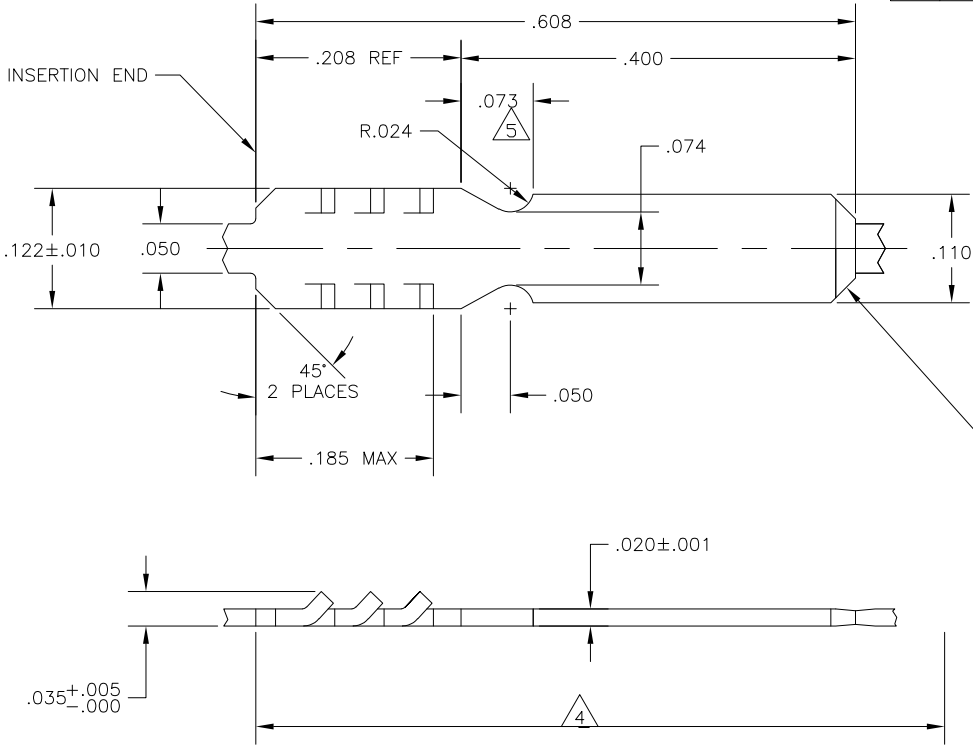
3

2

1

THIS DRAWING IS UNPUBLISHED. RELEASED FOR PUBLICATION
 © COPYRIGHT - BY TYCO ELECTRONICS CORPORATION. ALL RIGHTS RESERVED.

LOC	DIST	REVISIONS			
P	LTR	DESCRIPTION	DATE	DWN	APVD
	D	REVISED PER ECR-09-007435	3/26/09	SS	MS



- 1 CONTINUOUS STRIP ON REELS.
- 2 A MAXIMUM OF TWO (2) SPLICES PER REEL.
- 3 .000150 MIN PRE-TIN PLATE OVER .000100 MIN COPPER UNDERPLATE.
- 4 FEED OVER EIGHT (8) TERMINALS SHALL BE 5.360±.010.
- 5 NO BURR PERMISSIBLE IN TIE-OFF AREA.

63945-1
 PART NUMBER

THIS DRAWING IS A CONTROLLED DOCUMENT.		DWN M.S. FEHER 03MAY2006	Tyco Electronics Corporation Harrisburg, PA 17105-3608	
DIMENSIONS: INCHES		CHK G.D. PORTA 03MAY2006	NAME BOBBIN TAB	
TOLERANCES UNLESS OTHERWISE SPECIFIED:		APVD G.D. PORTA 03MAY2006	PRODUCT SPEC -	
0 PLC ± -		APPLICATION SPEC	RESTRICTED TO	
1 PLC ± -		WEIGHT	SIZE A3	CAGE CODE 00779
2 PLC ± -		FINISH	DRAWING NO 63945	D
3 PLC ± .005			SCALE 10:1	SHEET 1 of 1
4 PLC ± -				REV D
ANGLES ± 5°				
MATERIAL H04 BRASS	FINISH -	CUSTOMER DRAWING		

AMP 1470-19 REV 31MAR2000