

4

3

2

1

THIS DRAWING IS UNPUBLISHED. RELEASED FOR PUBLICATION
 BY AMP INCORPORATED. ALL RIGHTS RESERVED.

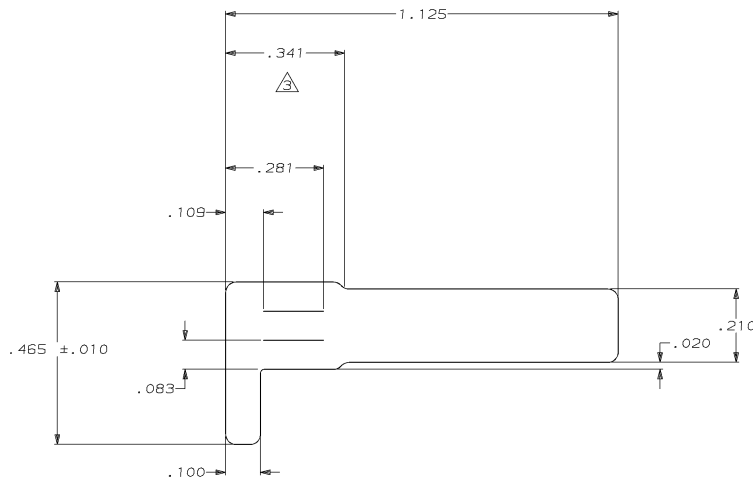
LOC	QTY	REV	DESCRIPTION	DATE	BY	APP'D
CM	52	A	REV PER EC 0730-0209-95	11-28-95	JH	RS

SEE NOTE 1



- PART IS DESIGNED TO PRESS FIT (BY HAND) ONTO A .093 PIN (AMP PART NO. 61137-1).
- SOLDERABILITY SPECIFICATION: PARTS SUPPLIED MUST MEET LATEST REVISION OF MIL-STD-202 METHOD 208, OR AMP SOLDERABILITY SPECIFICATION 109-11-5.

\triangle FROM INTENDED INTERSECTION.



794100-1
 PART NUMBER

IN	MM	IN	MM
.109	2.77	-	-
.100	2.54	1.125	28.58
.093	2.36	.465	11.81
.083	2.11	.341	8.66
.020	0.51	.281	7.14
.010	0.25	.210	5.33
.005	0.13	.195	4.95
IN	MM	IN	MM

CONVERSION TABLE

METRIC

THE REVIEW OF THIS DRAWING IS THE RESPONSIBILITY OF THE DESIGNER. MODIFICATIONS SHALL BE APPROVED BY THE DESIGNER.		D. LEWIS 8-30-95 SWING 8-30-95	AMP AMP Incorporated Harrisburg, PA 17105-3608
DIMENSIONS: INCHES	DIMENSIONS: OTHER THAN INCHES: OTHERWISE SPECIFIED:	NAME DATE	
MATERIAL PHOSPHOR BRONZE	FINISH PRE-TIN	APPLICATION SPEC WEIGHT CUSTOMER DRAWING	SIZE CASE CODE DRAWING NO. A2100779 ©-794100
SCALE: 5:1 SHEET 1 OF 1 REV A			PC-BOARD DISCONNECT TEST SWITCH

AMP 1471-B REV 10/93

28-NOV-95 12:46:52 amp18726/home/amp18726/u.ca-73-203-95

794100