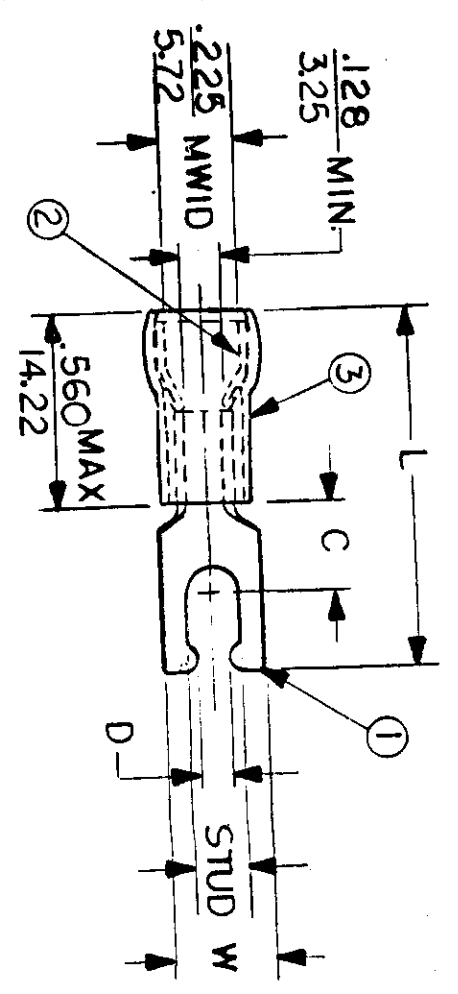


**NOTES:**

- ① MAT'L: COPPER (STOCK TKN.  $\frac{.040}{.102}$ )
  - ② PLATING: ELECTRO TIN (.0003 MIN)
  - ③ TIN-PLATED BRASS FUNNEL FERRULE
  - ④ NYLON INSULATION (COLOR CODED YELLOW)
- STUD SIZES: ( $\pm .005$ )
- 02 = .094  
 04 = .119  
 06 = .146  
 08 = .173  
 10 = .198  
 14 = .265  
 56 = .328  
 38 = .390
- "UL" LISTING #E32244  
 "CSA" LISTING #18689
- WIRE SIZE: 12-10 AWG<sup>2</sup>  
 4.0-6.0 MM<sup>2</sup>

ALL DIMENSIONS = INCHES (MM) (MWID) = DENOTES MAXIMUM WIRE INSULATION DIAMETER



FILE NO. C-CD-805-01

PART NUMBER	"W" ±.010	"C" MIN.	"L" MAX.	"D" ±.005	AVAILABLE STUD SIZES
C-8196-	$\frac{.290}{7.37}$	$\frac{.305}{7.75}$	$\frac{1.112}{28.24}$	$\frac{.111}{2.82}$	06
C-8197-	$\frac{.320}{8.13}$	$\frac{.305}{7.75}$	$\frac{1.140}{28.96}$	$\frac{.137}{3.48}$	08
C-8198-	$\frac{.320}{8.13}$	$\frac{.305}{7.75}$	$\frac{1.160}{29.46}$	$\frac{.163}{4.14}$	10
C-8199-	$\frac{.415}{10.54}$	$\frac{.375}{9.53}$	$\frac{1.286}{32.66}$	$\frac{.223}{5.66}$	14

DIMENSIONAL TOLERANCES UNLESS OTHERWISE SPECIFIED		REFERENCE	SCALE: NTS	DATE	TITLE:
FRAC.	DEC.	ANG.	DRWN. BY: JJ	11-13-84	SNAP SPADE TONGUE TERMINAL AVIKRIMP 800-SERIES
±	±	±	CHKD. BY: GZ	11-26-84	
±	±	±	APPRD. BY:		



DWG. NO. A CUSTOMER DWG