

NOTES:

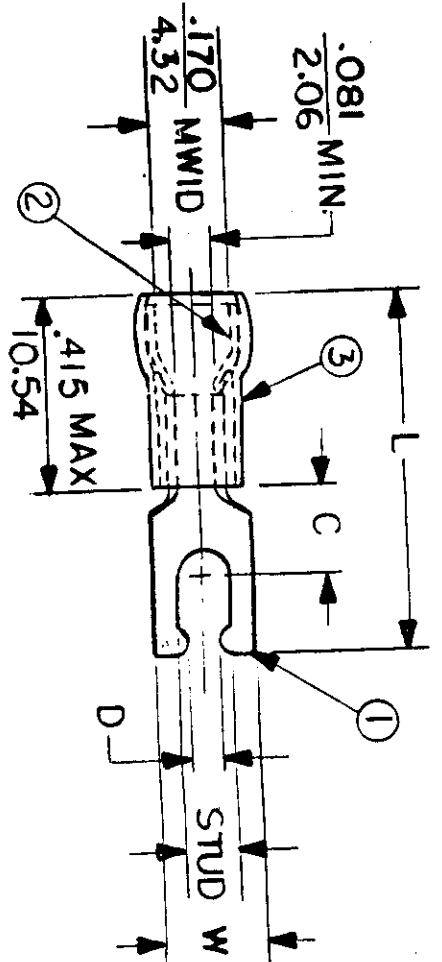
- ① MAT'L: COPPER (STOCK TKN. $\frac{.031}{.79}$)
- ② PLATING: ELECTRO TIN (.0003 MIN)
- ③ TIN-PLATED BRASS FUNNEL FERRULE
- ④ NYLON INSULATION (COLOR CODED BLUE)

STUD SIZES: ($\pm .005$)

- 02 = .094
- 04 = .119
- 06 = .146
- 08 = .173
- 10 = .198
- 14 = .265
- 56 = .328
- 38 = .390

"UL" LISTING # E32244
 "CSA" LISTING # 18689

WIRE SIZE: 16 - 14 AWG
 WIRE SIZE: 1.0 - 2.5 MM²



ALL DIMENSIONS = INCHES (MWD) = DENOTES MAXIMUM WIRE INSULATION DIAMETER

PART NUMBER	"W" ±.010	"C" MIN.	"L" MAX.	"D" ±.005	AVAILABLE STUD SIZES
BB-8193-	$\frac{.260}{6.60}$	$\frac{.235}{5.97}$	$\frac{.885}{22.48}$	$\frac{.111}{2.82}$	06
BB-8194-	$\frac{.290}{7.37}$	$\frac{.235}{5.97}$	$\frac{.895}{22.73}$	$\frac{.137}{3.48}$	08
BB-8195-	$\frac{.328}{8.33}$	$\frac{.235}{5.97}$	$\frac{.945}{24.00}$	$\frac{.163}{4.14}$	10

DIMENSIONAL TOLERANCES UNLESS OTHERWISE SPECIFIED		REFERENCE	SCALE:	NTS	DATE	TITLE:
FRAC.	DEC.	ANG.	DRWN. BY:	JJ	11.9.84	SNAP SPADE TONGUE TERMINAL AVIKRIMP 800-SERIES
±	±	±	CHKD. BY:	GZ	11.14.84	
			APPRD. BY:			

FILE NO. BB-CD-805 -01



DWG. NO. A CUSTOMER DWG