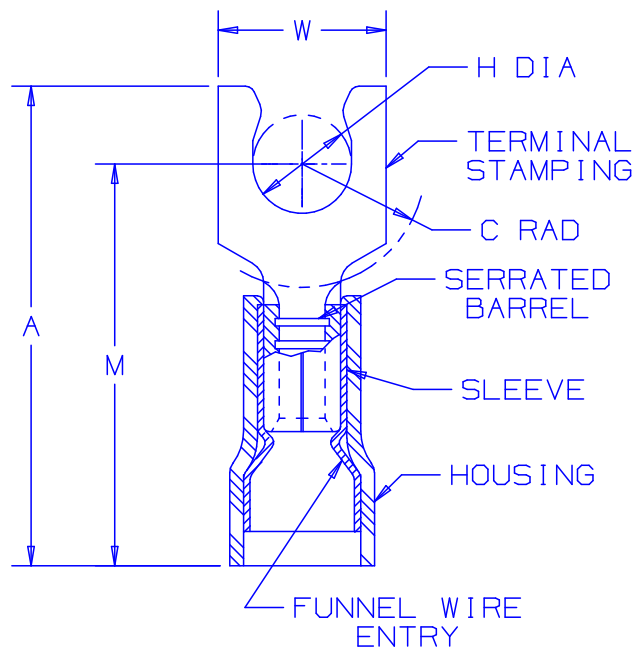


THIS COPY IS PROVIDED ON A RESTRICTED BASIS AND IS NOT TO BE USED IN ANY WAY DETRIMENTAL TO THE INTERESTS OF PANDUIT CORP.

PART NUMBER PREFIX	STUD SIZE	DIMENSIONS in.				
		A $\pm .03$ (.8)	W $\pm .01$ (.3)	C $\pm .015$ (.4)	M $\pm .03$ (.8)	H $\pm .010$ (.25)
PNF18-5SLF	#5	.75 (19.0)	.26 (6.6)	.19 (4.7)	.63 (16.1)	.124 (3.15)
PNF18-6SLF	#6	.75 (19.0)	.27 (6.9)	.19 (4.7)	.63 (16.1)	.136 (3.45)
PNF18-8SLF	#8	.80 (20.4)	.29 (7.4)	.23 (5.8)	.68 (17.2)	.162 (4.11)
PNF18-10SLF	#10	.81 (20.7)	.33 (8.3)	.23 (5.8)	.68 (17.2)	.188 (4.78)

NOTES:

- USED FOR:
 - A. 600V MAX VOLTAGE RATING (1000V. MAX. IN SIGNS, FIXTURES & LUMINARIES)
 - B. 221°F (105°C) MAX TEMP RATING
 - C. 22-18 AWG STRANDED COPPER WIRE
- INSTALLATION TOOLS:
 - A. UL LISTED AND CSA CERTIFIED FOR: CT-510
 - B. PANDUIT APPROVED: CT-400, CT-500, CT-1550 & CT-1551.
- WIRE STRIP LENGTH: $7/32^{+1/32}_{-0}$ (5.6 $^{+.8}_{-0}$)
- MAX WIRE INSULATION DIA: .145 (3.68)
MIN WIRE INSULATION DIA: .080 (2.03)
- MATERIAL:
 - A. STAMPING: .03 (.8) TIN PLATED COPPER
 - B. HOUSING : RED NYLON
 - C. SLEEVE : TIN PLATED BRASS
- PACKAGING:
 - A. STD PKG.: -C = 100
 - B. BULK ONLY: -M = 1000
- DIMENSIONS IN BRACKETS ARE IN MILLIMETERS OR mm²



LISTED
587H
E52164



CERTIFIED
LR31212

06	5/04	JHNU		REVISED NOTE 6, REMOVED PK COLUMN			
05	1/01	KMDSKB		CAD FILE SPEC. WAS N41251AA_PCD_04	08938	CCH	JAC
04	12/96	JAMB		UPDATED & ADDED TO NOTES, "MIN. WIRE INSUL. DIA."			
03	9/95	MS	RLS	UPDATED NOTES AND DIMENSIONS	05383		
02	6/92	BK	RS	UPDATED	01064	JMO	LA
REV	DATE	BY	CHK	DESCRIPTION	ECN	PM	APP

A41251_06

PANDUIT

CORP.

TINLEY PARK, ILLINOIS

#22-18 BARREL FUNNELED ENTRY NYLON
INSULATED SHORT LOCKING FORK,
.145 (3.68) MAX WIRE INSUL. DIA.

DRAWN BY DAW	CHK'D RLS	SCALE NONE	DRAWING NO. A41251
-----------------	--------------	---------------	-----------------------