

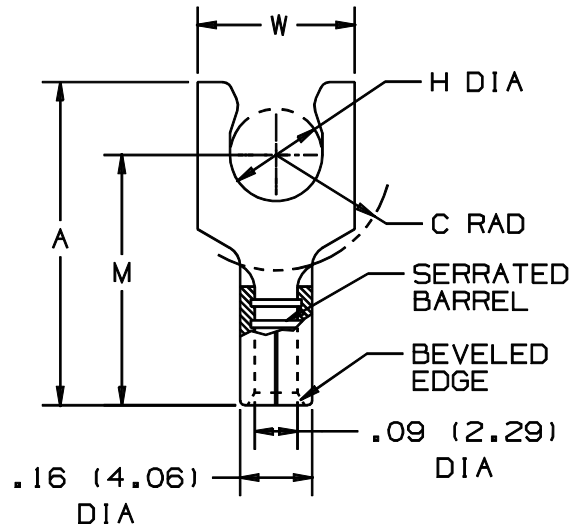
THIS COPY IS PROVIDED ON A RESTRICTED BASIS AND IS NOT TO BE USED IN ANY WAY DETRIMENTAL TO THE INTERESTS OF PANDUIT CORP.

PANDUIT PART NUMBER	STUD SIZE	DIMENSIONS in.				
		A $\pm .020$	W $\pm .010$	C $\pm .015$	M $\pm .020$	H $\pm .010$
P14-5SLF	#5	.51 (12.95)	.25 (6.35)	.22 (5.59)	.39 (9.91)	.12 (3.05)
P14-6SLF	#6	.51 (12.95)	.25 (6.35)	.22 (5.59)	.39 (9.91)	.14 (3.56)
P14-8SLF	#8	.56 (14.22)	.29 (7.37)	.25 (6.35)	.44 (11.18)	.16 (4.06)
P14-10SLF	#10	.57 (14.48)	.33 (8.38)	.25 (6.35)	.44 (11.18)	.19 (4.83)
P14-14SLF	1/4"	.66 (16.76)	.44 (11.18)	.35 (8.89)	.50 (12.70)	.25 (6.35)

NOTES:

- UL LISTED AND CSA CERTIFIED FOR:  
A. #16-14 AWG SOLID OR STRANDED COPPER WIRE
- MATERIAL:  
A. STAMPING - .03" (.76) THK COPPER, TIN PLATED
- PACKAGE QTY: STD. PKG. 100  
BULK PKG. 1000
- DIMENSIONS IN BRACKETS ARE IN MILLIMETERS
- INSTALLATION TOOLS:

- UL LISTED AND CSA CERTIFIED: CT-100, CT-200, CT-570, CT-1570
- PANDUIT APPROVED: CT-160, CT-260



A41243\_00

								<b>PANDUIT</b> CORP. TINLEY PARK, ILLINOIS							
								#16-14 BARREL NON-INSULATED SHORT LOCKING FORK							
00	5/99	JKD		RELEASED				DRAWN BY	DAW	CHK'D		SCALE	NONE	DRAWING NO.	A41243
REV	DATE	BY	CHK	DESCRIPTION	ECN	PM	APP	DRAWN BY	DAW	CHK'D		SCALE	NONE	DRAWING NO.	A41243