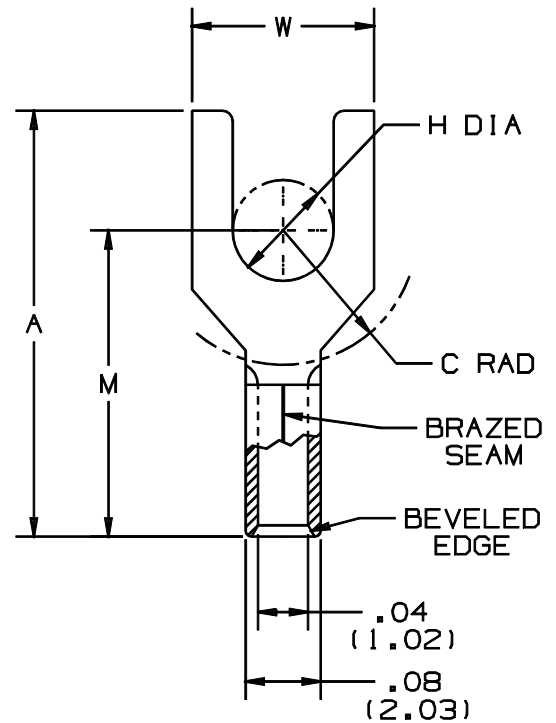


THIS COPY IS PROVIDED ON A RESTRICTED BASIS AND IS NOT TO BE USED IN ANY WAY DETRIMENTAL TO THE INTERESTS OF PANDUIT CORP.

PANDUIT PART NUMBER	STUD SIZE	DIMENSIONS in.				
		A $\pm .03$	W $\pm .01$	C $\pm .015$	M $\pm .03$	H $\pm .01$
P22-4F	#4	.49 (12.45)	.19 (4.83)	.20 (5.08)	.39 (9.91)	.13 (3.30)
P22-6F	#6	.59 (14.99)	.25 (6.35)	.26 (6.60)	.47 (11.94)	.15 (3.81)



NOTES:

1. RECOMMENDED FOR #26-22 SOLID OR STRANDED COPPER WIRE
2. MATERIAL:  
A. STAMPING - .020 (0.51) THK COPPER, TIN PLATED
3. PACKAGE QTY: STD. PKG. -C=100  
BULK PKG. -M=1000
4. DIMENSIONS IN BRACKETS ARE IN MILLIMETERS
5. INSTALLATION TOOLS: CT-100, CT-200
6. WIRE STRIP LENGTH: 3/16 <sup>1/32</sup>.0 (4.8 <sup>1/8</sup>.0)

A41229\_05

						<b>PANDUIT</b> CORP.		TINLEY PARK, ILLINOIS			
05	1/01	KMD		CAD FILE SPEC. WAS N41229AA_PCD_04				#26-22 BARREL NON-INSULATED FORK TONGUE			
04	11/94	TH		UPDATED NOTES AND DIMENSIONS		02650					
03	7/88	DW		REDRAWN WITH REVISIONS			JRB				
REV	DATE	BY	CHK	DESCRIPTION	ECN #	CUST	PM	DRAWN BY DAW	CHK'D	SCALE NONE	DRAWING NO. A41229A