

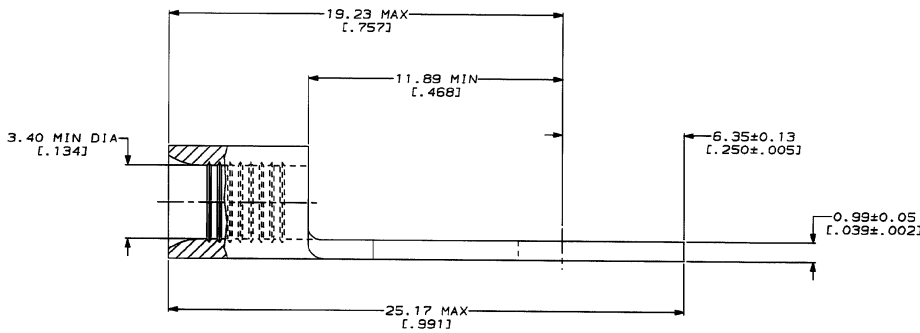
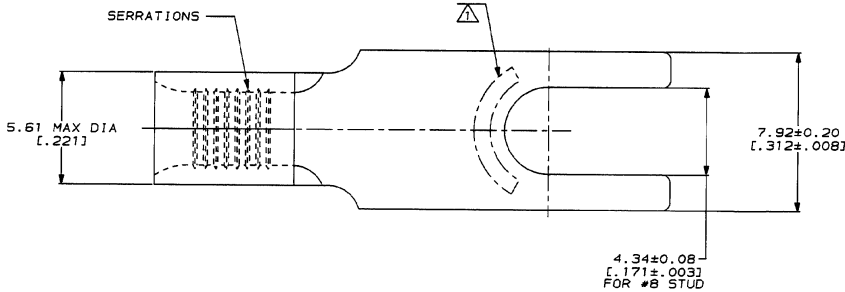
DRAWING MADE IN THIRD ANGLE PROJECTION
 THIS DRAWING IS UNPUBLISHED.
 © COPYRIGHT 19 BY AMP INCORPORATED. ALL INTERNATIONAL RIGHTS RESERVED.

LOC	DIST	ZONE	LTR	REVISIONS	DATE	APPD
6	14		A	REVISED PER 0720-0230-93	2/28/94	DJP

METRIC
 DIMENSIONS LISTED IN mm [INCHES]

AMP WIRE RANGE	U E13288 Listed
12-10 AWG STRANDED	12-10 AWG STRANDED
LR7189 Certified	MILITARY P/N AND CLASS
NOT CERTIFIED	NOT APPLICABLE

△ STAMP AMP 12-10* APPROX AS SHOWN



325195

PART NO

AMP INCORPORATED
 CUSTOMER SERVICE SYSTEMS

MAX RECOMMENDED OPERATING
 TEMPERATURE:
 170°C MAX

DO NOT SCALE PRINT.
 UNLESS SPECIFIED
 DIMENSIONS IN mm [INCHES]
 TOLERANCES ON ±
 3 PL DEC ± -
 ANGLES ± -
 MATERIAL

DR 2-18-93
 TA BRITNMAN
 CHK 2-18-93
 DA PATTERSON

AMP AMP Incorporated
 Harrisburg, PA 17105-3608

FOR ADDITIONAL
 PRODUCT INFORMATION OR
 COPIES OF DRAWINGS
 AND TECHNICAL DOCUMENTS

PRODUCT INFORMATION CENTER
 1-800-522-6752

VOLTAGE RATING:
 NOT APPLICABLE

COPPER PER
 ASTM B-152
 ANNEALED

APPD 2-18-93
 DE MILLER

NAME
 TERMINAL, SPADE
 TONGUE, BUDGET

FOR APPLICATION
 TOOLING INFORMATION

TOOLING ASSISTANCE CENTER
 1-800-722-1111

WIRE CROSS SECTIONAL AREA RANGE:
 2.62-6.64mm² [S, 180-13, 100] CIR MILS
 STRANDED

FINISH
 TIN PLATE
 0.00254 [.000100] MIN
 THK PER MIL-T-10727

APPD 2-18-93
 JL HECKLEY

APPLICATION SPEC
 -

SIZE
 CAGE CODE
 00779
 DRAWING NO
 C-325195

FOR ORDER ENTRY

1-800-526-5142

THIS DRAWING IS A CONTROLLED DOCUMENT FOR
 AMP INCORPORATED. IT IS SUBJECT TO CHANGE
 AND IS OBSOLETE FOR THE LATEST REVISION.

WEIGHT
 -

SCALE
 8:1

SHEET 1 OF 1

CUSTOMER DRAWING

AMP 1471-6 REV 3-92

28-FEB-94 14:43:59 amp26463 //files/dept1123/dwl123/u.bodlee/u.12-10

325195

A