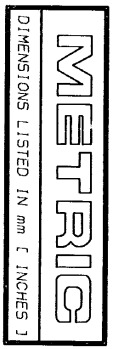
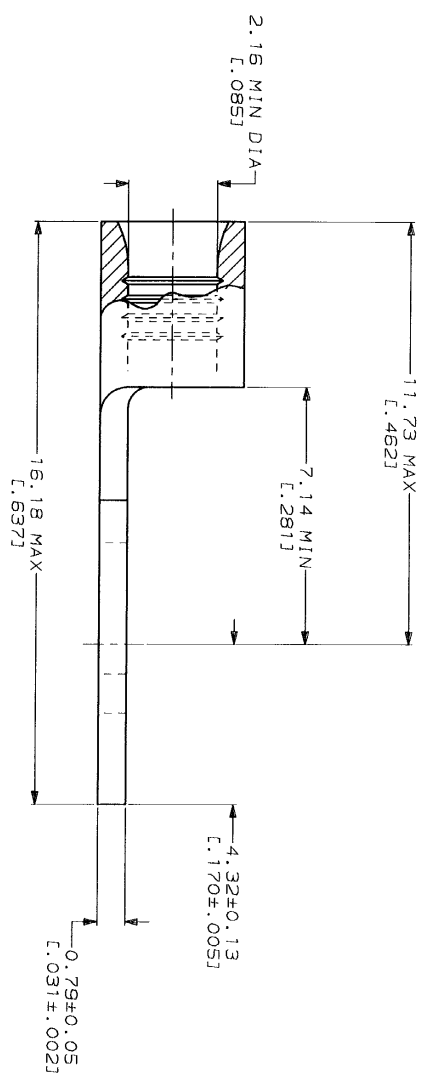
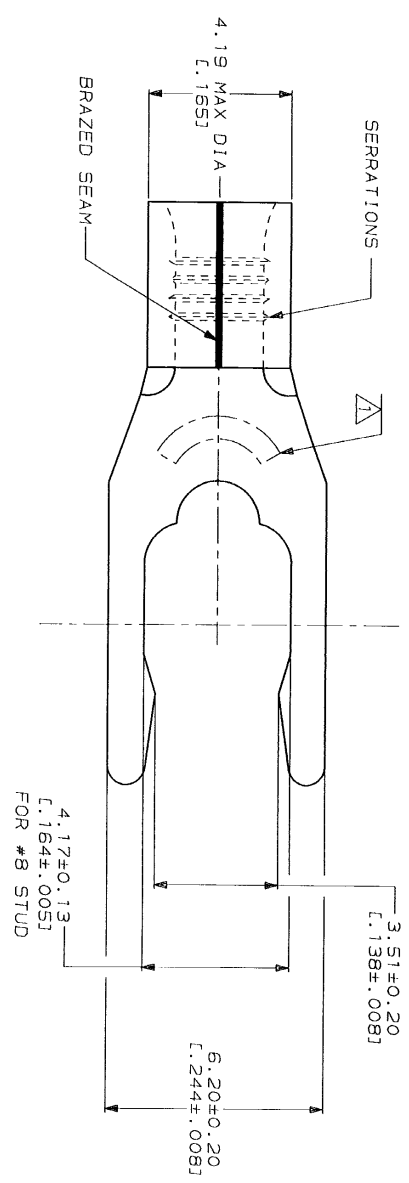


LOC	DIST	REV	DESCRIPTION	DATE	APP'D
G	14		REVISED & REDRAWN PER 0720-0040-53	3-29-93	1804P
		C	REACTIVATED 53833-1 PER 0720-6018-92		



AMP		UL E13288 Listed	
WIRE RANGE	16-14 AWG	SOLID OR STRANDED	16-14 AWG
	SOLID OR STRANDED		SOLID OR STRANDED
	LR7189 Certified		MILITARY P/N AND CLASS
	16-14 AWG		NOT APPLICABLE

STAMP BS AMP 16-14* APPROX AS SHOWN
 BS INDICATES STUD SIZE



AMP INCORPORATED
CUSTOMER SERVICE SYSTEMS

FOR ADDITIONAL PRODUCT INFORMATION OR COPIES OF DRAWINGS AND TECHNICAL DOCUMENTS	PRODUCT INFORMATION CENTER 1-800-522-6752
FOR APPLICATION TOOLING INFORMATION	TOOLING ASSISTANCE CENTER 1-800-722-1111
FOR ORDER ENTRY	1-800-526-5142

MAX RECOMMENDED OPERATING TEMPERATURE: 170°C MAX
 VOLTAGE RATING: NOT APPLICABLE
 WIRE CROSS SECTIONAL AREA RANGE: 1.04-2.62mm² (2.050-5.180) CIR MILS
 SOLID OR STRANDED

DO NOT SCALE PRINT.
 DIMENSIONS LISTED IN INCHES—TOLERANCES ON " " 2 PLC DEC ± . " 3 PLC DEC ± . "

DR 3-29-93
 TA BRINKMAN
 CHK 3-29-93
 DA PATTERSON
 APPD 3-29-93
 DE MILLER
 APPD 3-29-93
 JL MECKLEY
 PRODUCT SPEC

QUANTITY	5000	ON TAPE	53833-2
		LOOSE PIECE	53833-1
		PACKAGING TYPE	PART NO
			AMP Incorporated Harrisburg, PA 17105-3608

TERMINAL, SHORT
 SPRING SPADE, SOLID STRAND™

FINISH	TIN PLATE	APPLICATION SPEC	
0.00254L (0.00100) MIN THK PER MIL-T-10727			
SIZE	00779	DRAWING NO	53833
SCALE	10:1	SHEET	1 OF 1