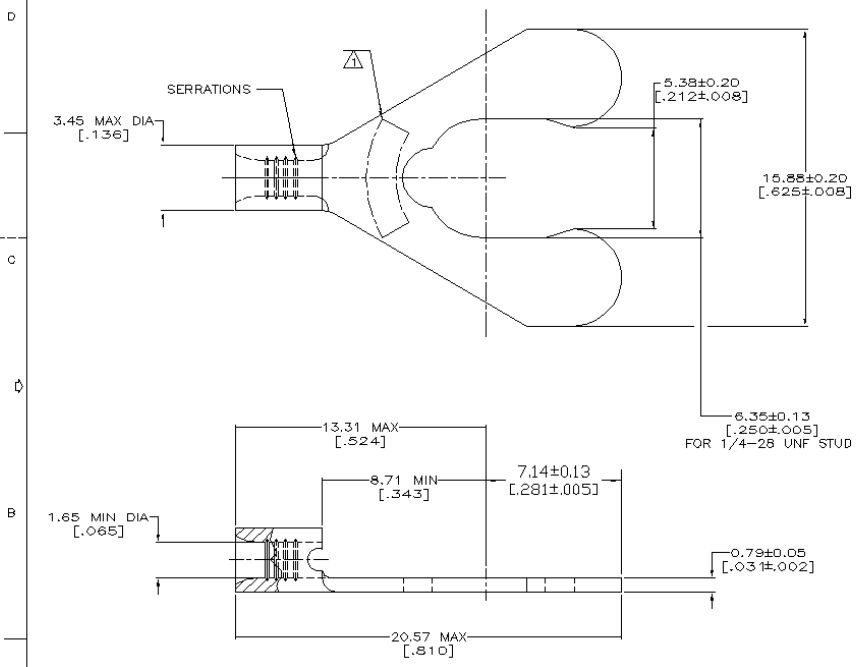


4
 THIS DRAWING IS UNPUBLISHED. RELEASED FOR PUBLICATION .19
 COPYRIGHT 19 BY AMP INCORPORATED. ALL INTERNATIONAL RIGHTS RESERVED.

LOC	QTY	REV	ZONE	LTR	DESCRIPTION	DATE	APP
G	14		A		REVISED PER 0720-0230-93	2/25/94	WJDAF

METRIC
 DIMENSIONS LISTED IN mm [INCHES]



AMP WIRE RANGE	E13288 Listed
22-16 AWG STRANDED	22-16 AWG STRANDED
LR7189 Certified	MILITARY P/N AND CLASS
NOT CERTIFIED	NOT APPLICABLE

△ STAMP 1/4S AMP 22-18* APPROX AS SHOWN
 22-16 TERMINALS ARE STAMPED 22-18 IN
 ACCORDANCE WITH MILITARY SPECIFICATION
 MIL-T-7928; COMMERCIAL WIRE RANGE IS 22-16
 1/4S INDICATES STUD SIZE

AMP INCORPORATED CUSTOMER SERVICE SYSTEMS		MAX RECOMMENDED OPERATING TEMPERATURE: 170° C MAX	DR 2-11-83 TA BRINKMAN	AMP AMP Incorporated Harrisburg, PA 17105-3608
FOR ADDITIONAL PRODUCT INFORMATION OR COPIES OF DRAWINGS AND TECHNICAL DOCUMENTS	PRODUCT INFORMATION CENTER 1-800-522-6752	VOLTAGE RATING: NOT APPLICABLE	CHK 2-11-83 DA PATTERSON	
FOR APPLICATION TOOLING INFORMATION	TOOLING ASSISTANCE CENTER 1-800-722-1111	WIRE CROSS SECTIONAL AREA RANGE: 0.28-1.85mm ² [509-3,260] CIR MILS STRANDED	APPD 2-11-83 DE MILLER	NAME TERMINAL, SHORT SPRING SPADE, BUDGET
FOR ORDER ENTRY	1-800-526-5142	FINISH TIN PLATE 0.00254[.000100] MIN THK PER MIL-T-10727	APPD 2-11-83 JL MCKEY	SIZE 8:1
AMP 107-4 REV 3-83		DO NOT SCALE PRINT. UNLESS SPECIFIED DIMENSIONS IN mm [INCHES] TOLERANCES ON: 3 PLD DEG ± - ANGLES ± -	APPLICATION SPEC -	DRAWING NO 53235
16-109-34 16-34-02 0162843 /files/des1123/dwg1123/w_bodies/u-22-18		THIS DRAWING IS A CONTROLLED DOCUMENT AND THE CONTENTS IS SUBJECT TO PATENT RIGHTS WHICH SHOULD BE CONTACTED FOR THE LATEST VERSION.	WEIGHT -	SHEET 10F 1

CUSTOMER DRAWING