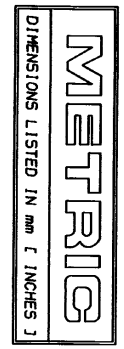
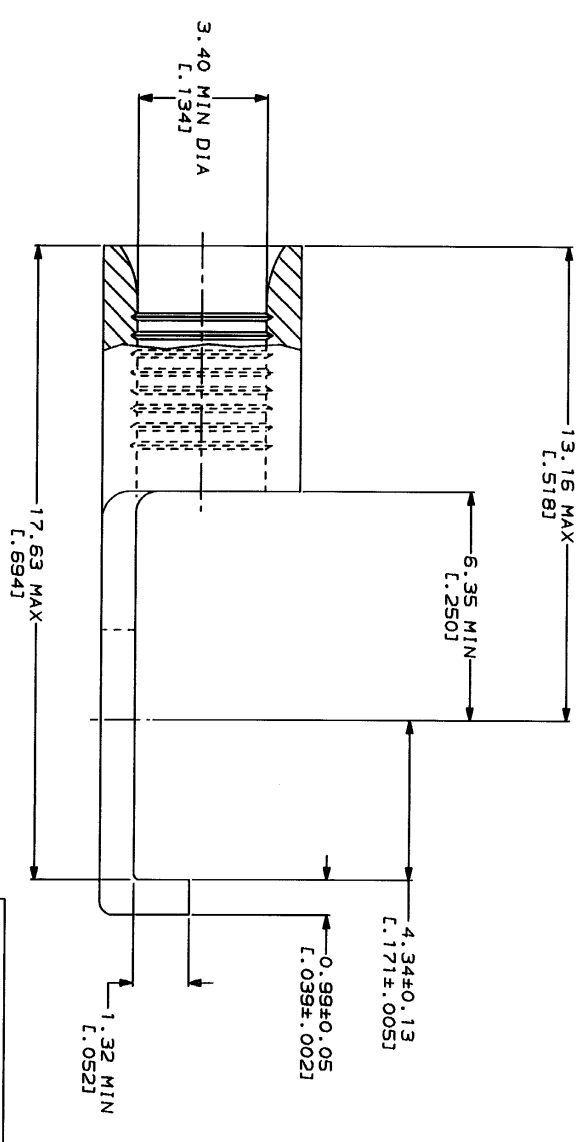
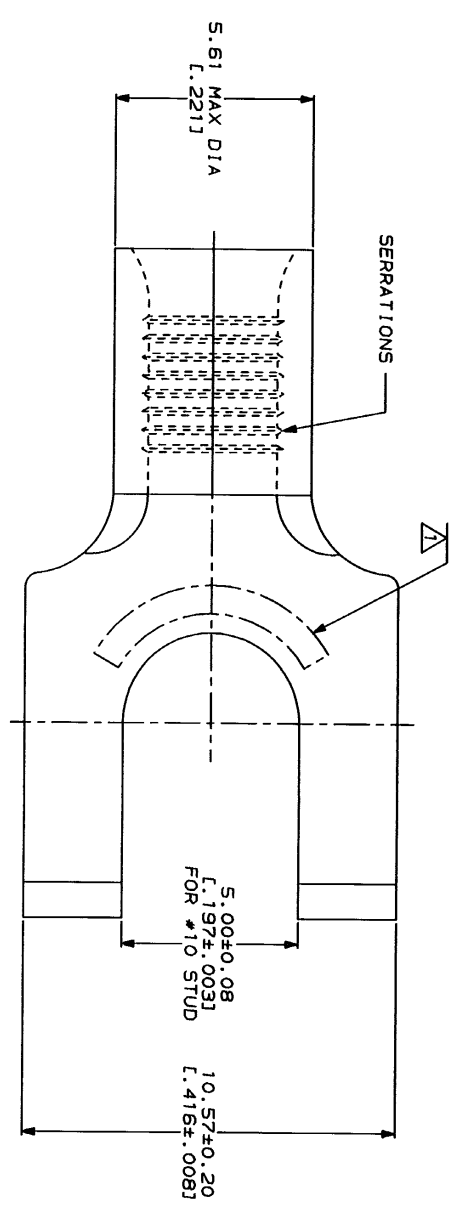


REV	DATE	DESCRIPTION
1		
2		
3		
4		



AMP WIRE RANGE	E13288 Listed
12-10 AWG STRANDED	12-10 AWG STRANDED

LR7189 Certified	MILITARY P/N AND CLASS
NOT CERTIFIED	NOT APPLICABLE



△ STAMP AMP 12-10* APPROX AS SHOWN

AMP INCORPORATED CUSTOMER SERVICE SYSTEMS		MAX RECOMMENDED OPERATING TEMPERATURE: 170°C MAX		DO NOT SCALE PRINT. UNLESS SPECIFIED OTHERWISE DIMENSIONS ON DRAWINGS ARE IN INCHES. 3 P.C. DEC 2 ANGLES		DR 3-4-83 TA BRINKMAN CHK 3-4-83 DA PATTERSON APPD 3-4-83 DE MILLER		NAME: AMP INCORPORATED HARRISBURG, PA 17105-3608	
FOR ADDITIONAL PRODUCT INFORMATION OR COPIES OF DRAWINGS AND TECHNICAL DOCUMENTS 1-800-522-6752		VOLTAGE RATING: NOT APPLICABLE		FINISH: TIN PLATE 0.0025±L, 0.001001 MIN THK PER MIL-T-10727		APPD 3-4-83 JL WEDLEY PRODUCT SPEC		AMP TERMINAL, FLANGED SPADE, BUDGET	
FOR APPLICATION TOOLING INFORMATION 1-800-722-1111		WIRE CROSS SECTIONAL AREA RANGE: 2.62-6.64mm² (S, 180-13,100) CIR MILS STRANDED		TIN PLATE 0.0025±L, 0.001001 MIN THK PER MIL-T-10727		APPD 3-4-83 JL WEDLEY PRODUCT SPEC		PART NO: 322725	
FOR ORDER ENTRY 1-800-526-5142		WIRE CROSS SECTIONAL AREA RANGE: 2.62-6.64mm² (S, 180-13,100) CIR MILS STRANDED		TIN PLATE 0.0025±L, 0.001001 MIN THK PER MIL-T-10727		APPD 3-4-83 JL WEDLEY PRODUCT SPEC		DRAWING NO: 322725	