

4

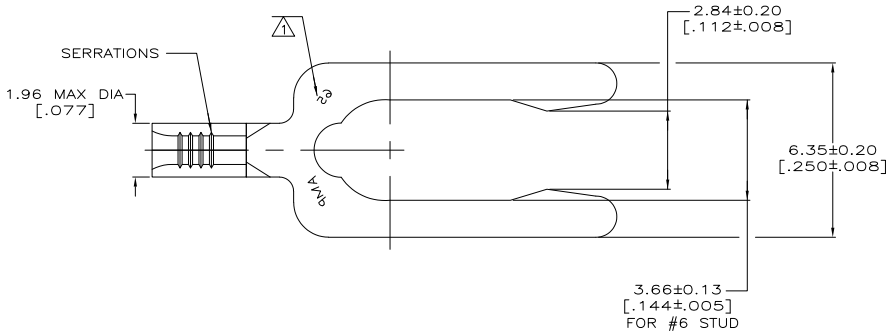
3

2

1

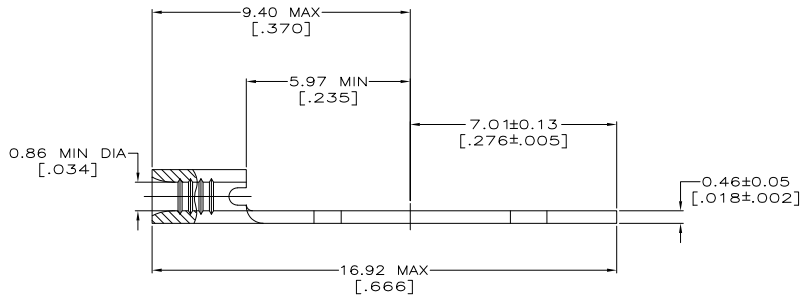
THIS DRAWING IS UNPUBLISHED. RELEASED FOR PUBLICATION
 © COPYRIGHT BY TYCO ELECTRONICS CORPORATION. ALL INTERNATIONAL RIGHTS RESERVED.

LOC		DIBT		REVISIONS			
G	14	P	LR	DESCRIPTION	DATE	BY	APPD
		A1		REV PER EDR 10-016092	09AUG10	JR	TM



AMP WIRE RANGE	Listed FILE E13288	LR7189 Certified
26-22 AWG STRANDED	NOT LISTED	NOT CERTIFIED

- ⚠ STAMP 6S AMP APPROX AS SHOWN
6S INDICATES STUD SIZE
- ⚠ PHOSPHOR BRONZE PER ASTM B103, ANNEALED



52734-1
PART NO.

CUSTOMER SERVICE SYSTEMS	
FOR ADDITIONAL PRODUCT INFORMATION OR COPIES OF DRAWINGS AND TECHNICAL DOCUMENTS	PRODUCT INFORMATION CENTER 1-800-522-6752
FOR APPLICATION	TOOLING ASSISTANCE CENTER 1-800-722-1111
FOR ORDER ENTRY	1-800-526-5142

MAX RECOMMENDED OPERATING TEMPERATURE: 170°C MAX	VOLTAGE RATING: N/A	CIRCULAR MIL AREA: 0.10-0.41mm ² (202-810) STRANDED
---	------------------------	--

THIS DRAWING IS A CONTROLLED DOCUMENT.	
DIMENSIONS: MM (INCHES)	OTHER DIMENSIONS: OTHER DIMENSIONS:
0 PLC ±	0 PLC ±
1 PLC ±	1 PLC ±
2 PLC ±	2 PLC ±
3 PLC ±	3 PLC ±
4 PLC ±	4 PLC ±
ANGLES ±	ANGLES ±
MATERIAL: - ⚠	FINISH: TIN PLATE PER ASTM B545

DR: TA BRINKMAN 2-15-93	TYCO ELECTRONICS Corporation Harrisburg, PA 17105-3608
CR: DA PATTERSON 2-15-93	TERMINAL, LONG SPRING SPADE, BUDGET
APP: JUL MECKLEY 2-15-93	SIZE: A2 CAGE CODE: 00779 DRAWING NO: C=52734
APPLICATION SPEC: -	RESTRICTED TO: -
WEIGHT: -	SCALE: 10:1 SHEET: 1 of 1 REV: A1