

4

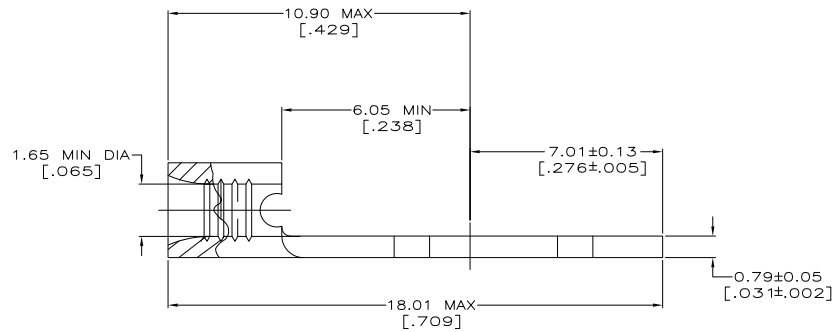
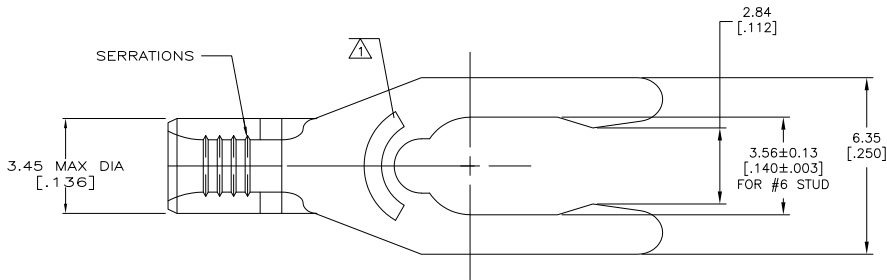
3

2

1

THIS DRAWING IS UNPUBLISHED. RELEASED FOR PUBLICATION
 © COPYRIGHT BY TYCO ELECTRONICS CORPORATION. ALL INTERNATIONAL RIGHTS RESERVED.

LOC	DIST	REVISIONS		DWG	DATE	BY	APP'D
G	14	P	LTR				
		B	REV PER ECR	09-026308	10DEC09	JR	TM



AMP WIRE RANGE	Listed FILE E13288	LR7189 Certified
22-16 AWG STRANDED	22-16 AWG STRANDED	NOT CERTIFIED

- 1 STAMP 8S AMP 22-18* APPROX AS SHOWN
22-16 TERMINALS ARE STAMPED 22-18 IN ACCORDANCE WITH MILITARY SPECIFICATION MIL-T-7928; COMMERCIAL WIRE RANGE IS 22-16 8S INDICATES STUD SIZE
- 2 PHOSPHOR BRONZE PER ASTM B-103, ANNEALED
- 3 TIN PLATE 0.00254 [.000100] MIN PER ASTM B-545
- 4 MAX RECOMMENDED OPERATING TEMP 170°C
- 5 WIRE CROSS SECTIONAL AREA RANGE: 0.26-1.65mm² [509-3,260] CIR MILS STRANDED

52700-1
 PART NO.

THIS DRAWING IS A CONTROLLED DOCUMENT.		DR. TA BRINKMAN 2-15-93	Tyco Electronics Corporation Harrisburg, PA 17105-3608	
DIMENSIONS: MM (INCHES)		CHK. DA PATTERSON 2-15-93	TERMINAL, LONG SPRING SPADE, BUDGET	
TOLERANCES UNLESS OTHERWISE SPECIFIED:		APP. JIL MECKLEY 2-15-93	SIZE CAGE CODE DRAWING NO. RESTRICTED TO	
0 PLC	±	APPLICATION SPEC	A2	00779C=52700
1 PLC	±	WEIGHT	CUSTOMER DRAWING	
2 PLC	± 0.20 (0.008)	FINISH	SCALE 10:1 SHEET 1 of 1 REV B	
3 PLC	±			
4 PLC	±			
ANGLES	±			

52700

A