

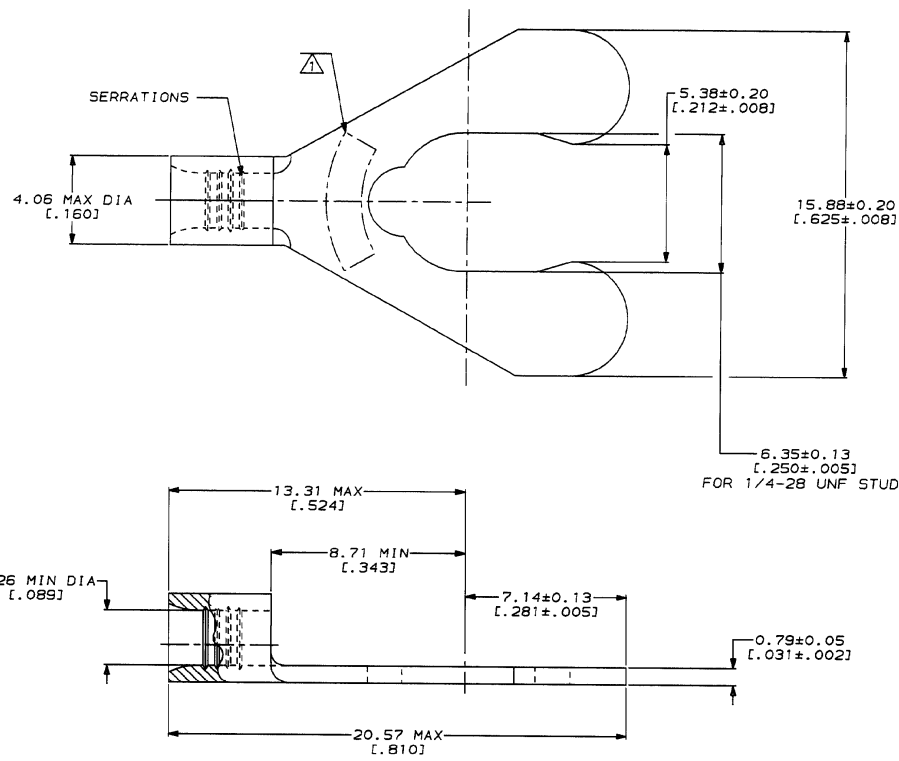
DRAWING MADE IN THIRD ANGLE PROJECTION
 THIS DRAWING IS UNPUBLISHED. RELEASED FOR PUBLICATION
 © COPYRIGHT 19 BY AMP INCORPORATED. ALL INTERNATIONAL RIGHTS RESERVED.

LOC	DIST	ZONE	LTR	DESCRIPTION	DATE	APPD
G	14		C	REVISED PER 0720-0230-93	2/28/94	DA P

METRIC
 DIMENSIONS LISTED IN mm [INCHES]

AMP WIRE RANGE	E13288 Listed
16-14 AWG STRANDED	16-14 AWG STRANDED
LR7189 Certified	MILITARY P/N AND CLASS
NOT CERTIFIED	NOT APPLICABLE

STAMP 1/4S AMP 16-14* APPROX AS SHOWN
 1/4S INDICATES STUD SIZE



AMP INCORPORATED CUSTOMER SERVICE SYSTEMS		MAX RECOMMENDED OPERATING TEMPERATURE: 170°C MAX	DO NOT SCALE PRINT. UNLESS SPECIFIED DIMENSIONS IN mm - INCHES TOLERANCES ON: 1 DEC ± - 2 PLC DEC ± - 3 PLC DEC ± - ANGLES ± -	DR 2-12-93 TA BRINKMAN	53032-1 PART NO	
FOR ADDITIONAL PRODUCT INFORMATION OR COPIES OF DRAWINGS AND TECHNICAL DOCUMENTS	PRODUCT INFORMATION CENTER 1-800-522-6752	VOLTAGE RATING: NOT APPLICABLE	MATERIAL PHOSPHOR BRONZE PER ASTM B-103 ANNEALED	CHK 2-12-93 DA PATTERSON	AMP AMP Incorporated Harrisburg, PA 17105-3608	
FOR APPLICATION TOOLING INFORMATION	TOOLING ASSISTANCE CENTER 1-800-722-1111	WIRE CROSS SECTIONAL AREA RANGE: 1.04-2.62mm² [2,050-5,180] CIR MILS STRANDED	FINISH TIN PLATE 0.00254 [.000100] MIN THK PER MIL-T-10727	APPD 2-12-93 DE MILLER	NAME TERMINAL, SHORT SPRING SPADE, BUDGET	
FOR ORDER ENTRY	1-800-526-5142	<small>THIS DRAWING IS A CONTROLLED DOCUMENT FOR AMP INCORPORATED. ALL RIGHTS TO COPYRIGHT SHOULD BE CONTACTED FOR THE LATEST REVISION.</small>	APPLICATION SPEC -	APPD 2-12-93 JL NECKLEY	PRODUCT SPEC -	SIZE CAGE CODE DRAWING NO 00779 C=53032
AMP 1471-6 REV 3-92			WEIGHT -	SCALE 8:1	SHEET 1 OF 1	CUSTOMER DRAWING

28-FEB-94 09:32:52 cmo26463 /files/dept1123/dwgl123/u.bodies/u.16-14

53032