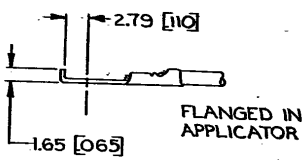
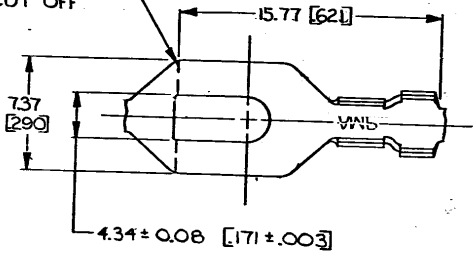


DRAWING MADE IN THIRD ANGLE PROJECTION

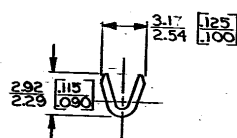
© COPYRIGHT 1964 BY AMP INCORPORATED, HARRISBURG, PA.
ALL INTERNATIONAL RIGHTS RESERVED. AMP INCORPORATED PRODUCTS
COVERED BY U. S. AND FOREIGN PATENTS AND/OR PATENTS PENDING.

REVISIONS				LOC	DIST	
P	F	ZONE	LTR	DESCRIPTION	DATE	APPROVED
		L		REDRAWN & REVISED A-3943	5-15-78	SE

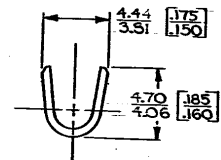
APPLICATOR
CUT OFF



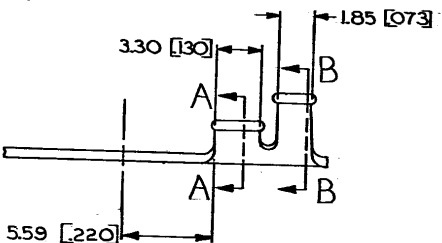
FLANGED IN
APPLICATOR



SECT A-A



SECT B-B



M 4 #8	0.2-0.6 mm ² [24-20]	2.03-2.54 [080-.100]	TIN	0.51 [020] BRASS.	41589 A
STUD SIZE	WIRE RANGE	INSULATION RANGE	FINISH	MATERIAL	PART NO 41589
UNLESS OTHERWISE SPECIFIED DIMENSIONS ARE IN INCHES TOLERANCES ON DECIMALS ANGLES		CONTRACT NO DR A. Maguire 5-15-78 CHK [Signature] 7/25/78		AMP INCORPORATED Harrisburg, Pa.	
MATERIAL	SEE TABLE	APPR R.D. Frank 8-1-78	APPR R.D. Frank 8-1-78	NAME SPADE	
FINISH	SEE TABLE	DSGN APPD	OTHER APPD	SIZE B	CODE IDENT NO 00779
				DRAWING NO 41589	SHEET

- 1. CONTINUOUS STRIP ON REELS.
- 2. DIMENSIONS IN BRACKETS ARE IN INCHES.
- 3. SUFFIX LETTER MUST BE USED ONLY WHEN ORDERING APPLICATOR TOOLING.

METRIC

CUSTOMER DRAWING