

4

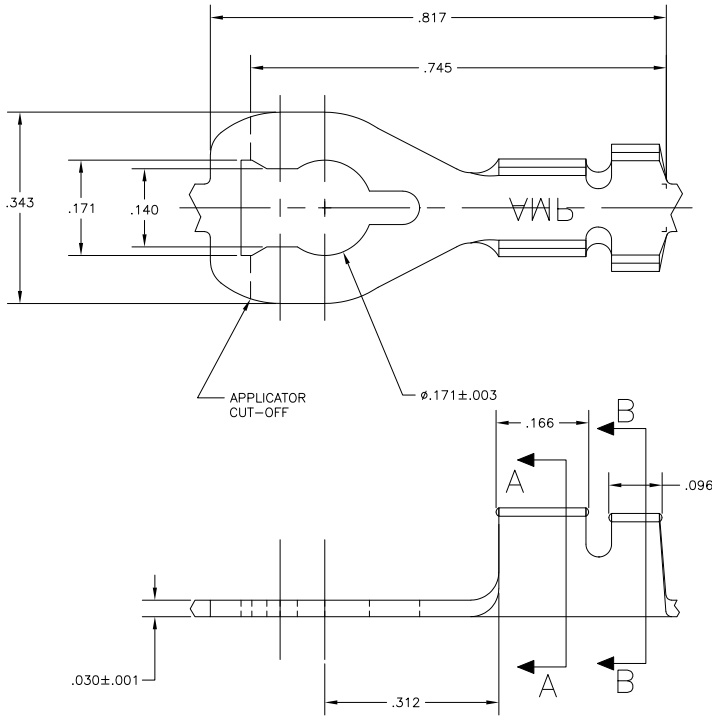
3

2

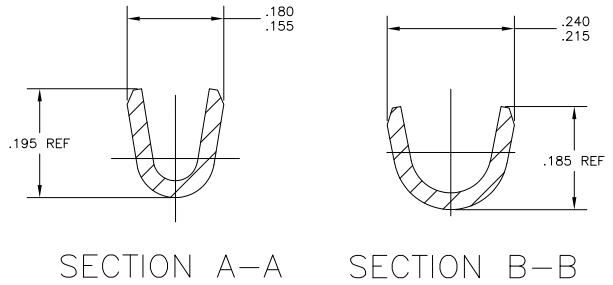
1

THIS DRAWING IS UNPUBLISHED. RELEASED FOR PUBLICATION
 © COPYRIGHT BY TYCO ELECTRONICS CORPORATION. ALL INTERNATIONAL RIGHTS RESERVED.

LOC		DIBT		REVISIONS		
P	LTR	DESCRIPTION	DATE	BY	APPD	
AF	50					
J		REVISED PER ECR-10-006099	09JUL10	HMR	PD	



1. CONTINUOUS STRIP ON REELS.
2. WIRE RANGE: #16-#12 AWG.
3. INSULATION RANGE: .110-.150 DIA.



62795-1
 PART NUMBER

THIS DRAWING IS A CONTROLLED DOCUMENT.		DWG: MICHAEL S. FEHNER 03AUG2004 CHK: DONALD F. DECKER 03AUG2004 APP: DONALD F. DECKER 03AUG2004 PRODUCT SPEC:	Tyco Electronics Corporation Harrisburg, PA 17105-3608
DIMENSIONS: INCHES	DIMENSIONS: MILLIMETERS	APPLICATION SPEC:	SIZE: A2 CAGE CODE: 00779 DRAWING NO: C-62795
MATERIAL: HD4 BRASS FINISH: TIN	DIMENSIONS: 0 PLC ± .010 1 PLC ± .005 2 PLC ± .005 3 PLC ± .015 4 PLC ± .010 ANGLES ± .5°	WEIGHT:	RESTRICTED TO:
		CUSTOMER DRAWING	SCALE: 10:1 SHEET 1 of 1 REV J

1471-9 (1/08)

62795

A