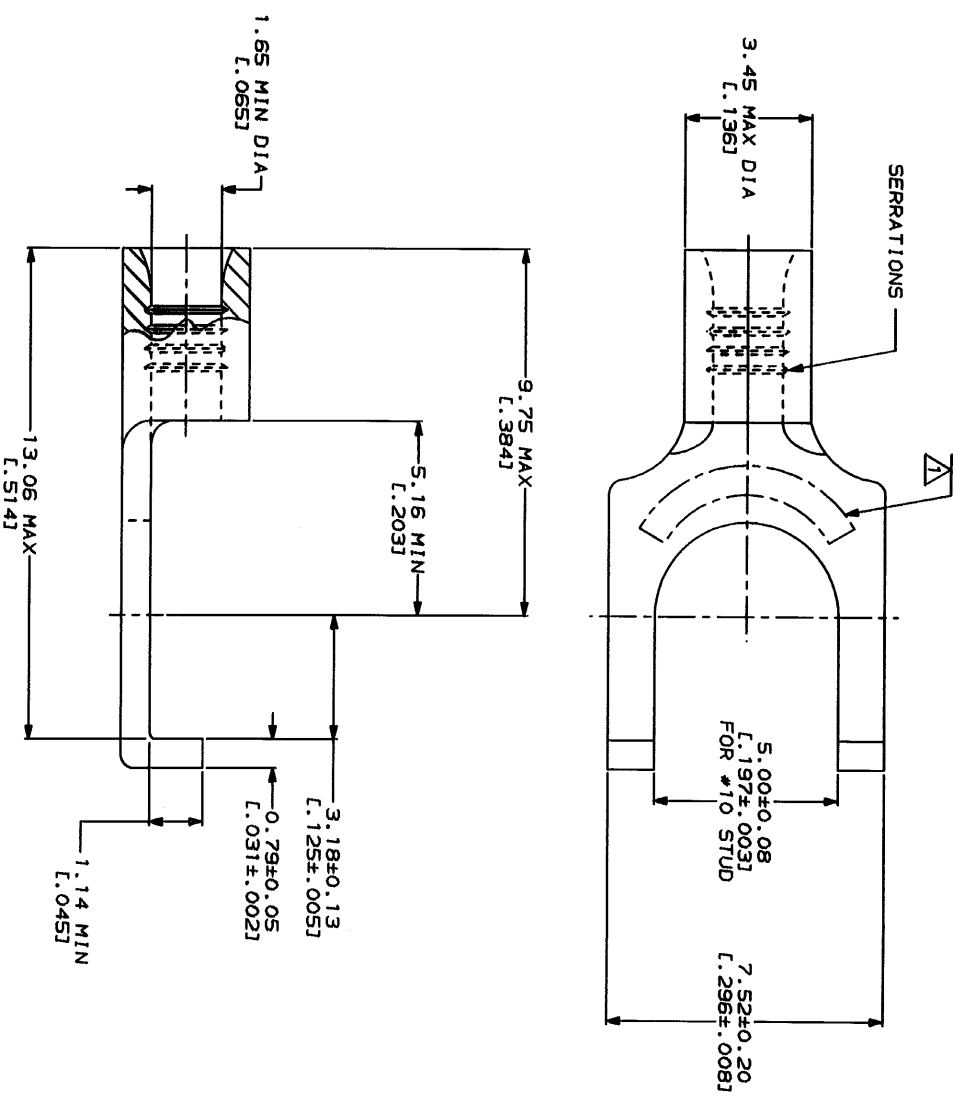




AMP WIRE RANGE 22-16 AWG STRANDED	ET3288 Listed
• LR7189 Certified	MILITARY P/N AND CLASS
NOT CERTIFIED	NOT APPLICABLE

△ STAMP AMP 22-18* APPROX AS SHOWN
22-16 TERMINALS ARE STAMPED 22-18 IN
ACCORDANCE WITH MILITARY SPECIFICATION
MIL-T-7928, COMMERCIAL WIRE RANGE IS 22-16



AMP INCORPORATED CUSTOMER SERVICE SYSTEMS		MAX RECOMMENDED OPERATING TEMPERATURE: 170°C MAX		DO NOT SCALE PRINT. DIMENSIONS SPECIFIED TOLERANCES IN PARENT 2 PLG DEC ± .001 3 PLG DEC ± .001 ANGLES MATERIAL	
FOR ADDITIONAL PRODUCT INFORMATION OR COPIES OF DRAWINGS AND TECHNICAL DOCUMENTS	PRODUCT INFORMATION CENTER 1-800-522-5752	VOLTAGE RATINGS: NOT APPLICABLE		COPPER PER ASTM B-152 ANNEALED	
FOR APPLICATION TOOLING INFORMATION	TOOLING ASSISTANCE CENTER 1-800-722-1111	WIRE CROSS SECTIONAL AREA RANGE, 0.26-1.65mm ² (509-3,260) CIR MILS STRANDED		FINISH TIN PLATE 0.00254(.0001001) MIN THK PER MIL-T-10727	
FOR ORDER ENTRY	1-800-526-5142	DR 3-2-83 TA BRIMMAN CHK 3-2-83 DA PATTERSON		APPD 3-2-83 DE MILLER	
AMP 167-6 REV 3-82		AMP Incorporated Harrisburg, PA 17105-3608		NAME TERMINAL, FLANGED SPADE, BUDGET	
AMP 15-11-37		328522 PART NO		SIZE 00779	
15-11-37		CUSTOMER DRAWING		CASE CODE G-328522	
15-11-37		1 OF 1		DRAWING NO G-328522	