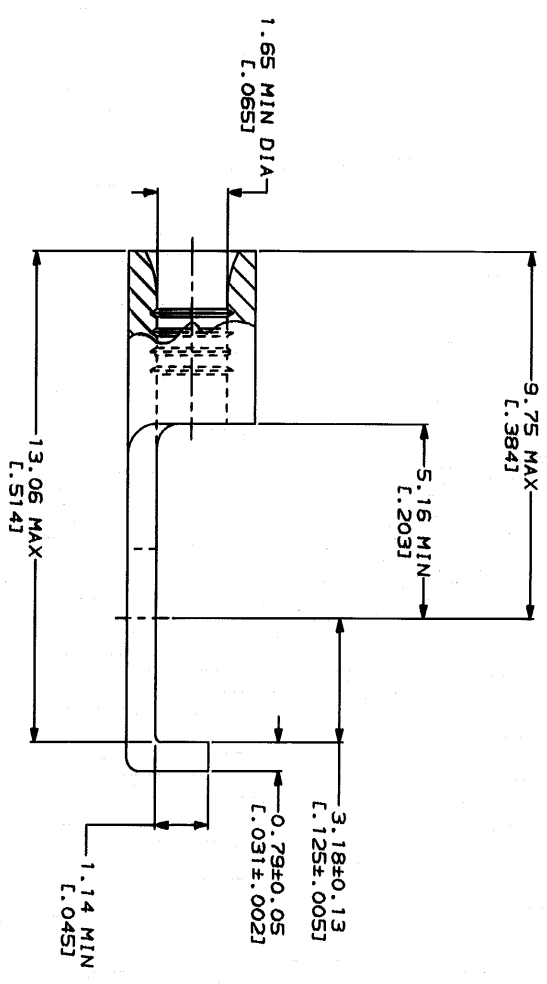


METRIC
DIMENSIONS LISTED IN mm [INCHES]

AMP WIRE RANGE	UL E13288 Listed
22-16 AWG STRANDED	22-16 AWG STRANDED
● LRT189 Certified	MILITARY P/N AND CLASS
NOT CERTIFIED	NOT APPLICABLE

△ STAMP AMP 22-18* APPROX AS SHOWN
22-16 TERMINALS ARE STAMPED 22-18 IN ACCORDANCE WITH MILITARY SPECIFICATION MIL-T-7928, COMMERCIAL WIRE RANGE IS 22-16



QUANTITY	STUD SIZE	H	PACKAGING TYPE	PART NO
5000	8	4.34±0.08 L.171±.0031	1-32418-2 ON TAPE	1-32418-4
---	8	4.34±0.08 L.171±.0031	LOOSE PIECE	1-32418-2
---	6	3.68±0.08 L.145±.0031	LOOSE PIECE	32418

AMP INCORPORATED
CUSTOMER SERVICE SYSTEMS

FOR ADDITIONAL PRODUCT INFORMATION OR COPIES OF DRAWINGS AND TECHNICAL DOCUMENTS: PRODUCT INFORMATION CENTER 1-800-522-6752

FOR APPLICATION TOOLING INFORMATION: TOOLING ASSISTANCE CENTER 1-800-722-1111

FOR ORDER ENTRY: 1-800-526-5142

MAX RECOMMENDED OPERATING TEMPERATURE: 170°C MAX

VOLTAGE RATING: NOT APPLICABLE

WIRE CROSS SECTIONAL AREA RANGE: 0.26-1.65mm² (509-3,280) CIR MILS STRANDED

DO NOT SCALE PRINT. DIMENSIONS LISTED IN INCHES—TOLERANCES ON: 1 2 PLG DEC ± 3 PLG DEC ± ANGLES MATERIAL COPPER PER ASTM B-152 ANNEALED

TIN PLATE 0.00254L.0001001 MIN THK PER MIL-T-10727

OR 3-2-83 IN BRINHAM 3-2-83 DA PATTERSON 3-2-83 DE MILLER 3-2-83 JL NECKLEY

APPLICATION SPEC

AMP Incorporated
Harrisburg, PA 17105-3608

TERMINAL, FLANGED SPADE, BUDGET

SIZE: GAGE CODE 00779 DRAWING NO: G-32418

SCALE: 10:1

REVISIONS

LOC	DIST	REV	DATE	APP'D
6	14	5	REVISED PER 0720-0230-93	

CUSTOMER DRAWING 1 OF 1