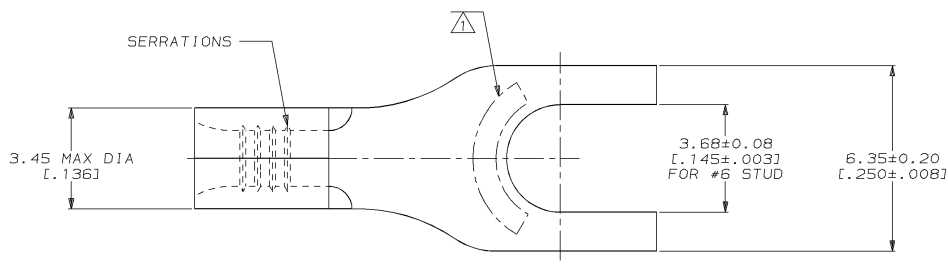


4 3 2 1  
 DRAWING MADE IN THIRD ANGLE PROJECTION  
 THIS DRAWING IS UNPUBLISHED. RELEASED FOR PUBLICATION, 19  
 © COPYRIGHT 19 BY AMP INCORPORATED. ALL INTERNATIONAL RIGHTS RESERVED.

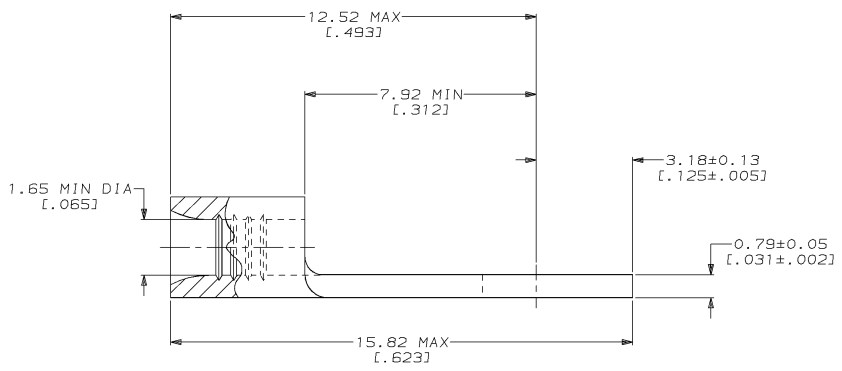
| LOC | DIST | P | F | ZONE | LTR | REVISIONS                | DATE    | APPD |
|-----|------|---|---|------|-----|--------------------------|---------|------|
| G   | 14   |   |   |      | B   | REVISED PER 0720-0937-96 | 05JUN96 | gms  |

**METRIC**  
 DIMENSIONS LISTED IN mm [ INCHES ]



|                               |                            |
|-------------------------------|----------------------------|
| <b>AMP</b><br>WIRE RANGE      | <b>UL</b> E13288<br>Listed |
| 22-16 AWG<br>STRANDED         | 22-16 AWG<br>STRANDED      |
| <b>UL</b> LR7189<br>Certified | MILITARY P/N<br>AND CLASS  |
| NOT<br>CERTIFIED              | NOT APPLICABLE             |

⚠ STAMP AMP 22-18\* APPROX AS SHOWN  
 22-16 TERMINALS ARE STAMPED 22-18 IN  
 ACCORDANCE WITH MILITARY SPECIFICATION  
 MIL-T-7928; COMMERCIAL WIRE RANGE IS 22-16



|          |                  |           |
|----------|------------------|-----------|
| 50       | LOOSE PIECE, BOX | 8-34518-2 |
| -        | LOOSE PIECE      | 34518     |
| QUANTITY | PACKAGE TYPE     | PART NO   |

|  |  |   |  |   |  |
|--|--|---|--|---|--|
| <b>AMP INCORPORATED</b><br>CUSTOMER SERVICE SYSTEMS                              |  | MAX RECOMMENDED OPERATING TEMPERATURE:<br>170°C MAX   | DO NOT SCALE PRINT.<br>UNLESS SPECIFIED<br>DIMENSIONS IN mm [INCHES]<br>TOLERANCES ON:<br>2 PLC DEC # -<br>3 PLC DEC # -<br>ANGLES ± - | DR 2-16-93<br>TA BRYNKMAN<br>CHK 2-16-93<br>DA PATTERSON<br>APPD 2-16-93<br>DE MILLER<br>APPD 2-16-93<br>JL MECKLEY<br>PRODUCT SPEC - | <b>AMP</b> AMP Incorporated<br>Harrisburg, PA 17105-3608 |
| FOR ADDITIONAL PRODUCT INFORMATION OR COPIES OF DRAWINGS AND TECHNICAL DOCUMENTS | PRODUCT INFORMATION CENTER<br>1-800-522-6752 | VOLTAGE RATING:<br>NOT APPLICABLE   | MATERIAL<br>COPPER PER<br>ASTM B-152<br>ANNEALED   | NAME<br>TERMINAL, SPADE TONGUE,<br>BUDGET   |  |
| FOR APPLICATION TOOLING INFORMATION  | TOOLING ASSISTANCE CENTER<br>1-800-722-1111  | WIRE CROSS SECTIONAL AREA RANGE:<br>0.26-1.65mm <sup>2</sup> [509-3,260] CIR MILS<br>STRANDED   | FINISH<br>TIN PLATE<br>0.00254 [0.00100] MIN<br>THK PER MIL-T-10727  | SIZE<br>C 00779   | DRAWING NO<br>C-34518                                    |
| FOR ORDER ENTRY  | 1-800-526-5142                               | THIS DRAWING IS A CONTROLLED DOCUMENT FOR AMP INCORPORATED. IT IS SUBJECT TO CHANGE AND THE CONTROLLING ENGINEERING ORGANIZATION SHOULD BE CONTACTED FOR THE LATEST REVISION. | APPLICATION SPEC<br>-  | SCALE<br>10:1   | SHEET<br>1 OF 1  |

AMP 1471-6 REV 3-92  
 05-JUN-96 11:05:28 amq26463 /files/dept1123/dwg1123/u.bodies/u.22-16

CUSTOMER DRAWING