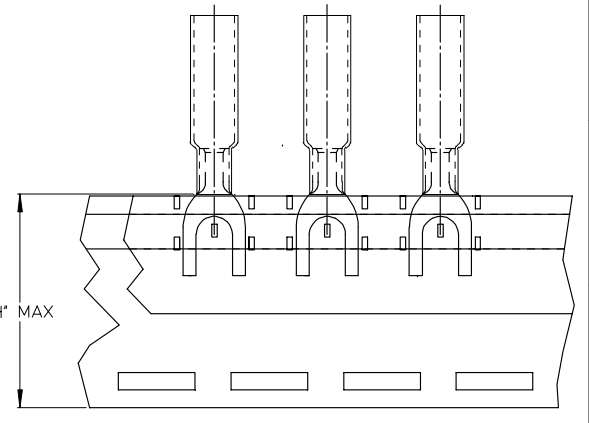
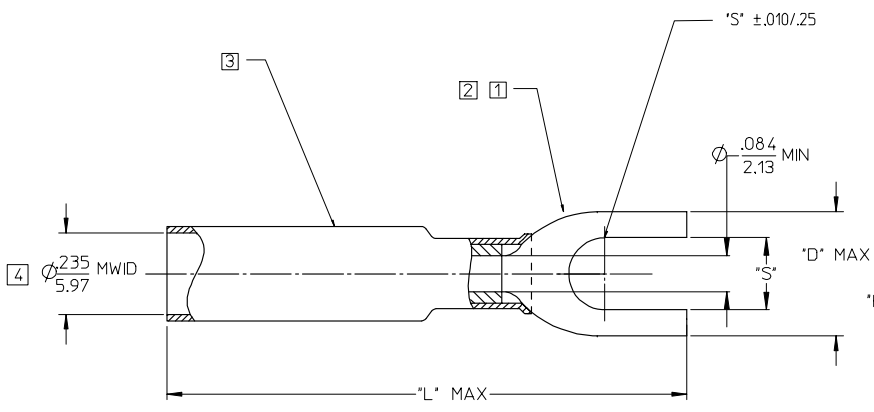


10	9	8	7	6	5	4	3	2	1
MATERIAL NUMBER LOOSE PC.	ENGINEERING NUMBER LOOSE PC.	MATERIAL NUMBER ON TAPE	ENGINEERING NUMBER ON TAPE	STUD SIZE	STUD HOLE SIZE 'S' ±.005/.13	'D'	'H'	'L'	
191640028	SB-227-06	191640948	SB-227-06T	#06	∅.146/3.71	.37/9.4	.990/25.15	1.42/36.1	
191640029	SB-227-08	191640949	SB-227-08T	#08	∅.173/4.39	.40/10.2	.990/25.15	1.42/36.1	
191640030	SB-227-10	191640950	SB-227-10T	#10	∅.198/5.03	.40/10.2	.990/25.15	1.42/36.1	



- NOTES:
- 1. TERMINAL MATERIAL: COPPER ALLOY .031/0.79 THK.
  - 2. FINISH: ELECTRO TIN PLATE.
  - 3. INSULATION MATERIAL: PERMA-SEAL SHRINKABLE TUBING WITH HOT-MELT ADHESIVE INNER LINER. COLOR: BLUE.
  - 4. MWID = MAXIMUM WIRE INSULATION DIAMETER.

PROPOSED	2005/06/28	QUALITY SYMBOLS	GENERAL TOLERANCES (UNLESS SPECIFIED)		DIMENSION STYLE		SCALE	DESIGN UNITS	THIRD ANGLE PROJECTION
	2005/07/11		mm	INCH	IN/MM	4:1	INCH		
DRAWN: SHADECK	2005/07/11	▽ = 0	4 PLACES	± ---	± ---	DRAWN BY	DATE	TITLE	
			3 PLACES	± ---	± ---	BE	02/09/03		
CHKD: ROSS	2005/07/11	▽ = 0	2 PLACES	± ---	± ---	CHECKED BY	DATE	PERMA-SEAL TERMINAL SPADE TERMINAL 16-14 AWG TAPE MOUNTED	
			1 PLACE	± ---	± ---	HB	02/09/03		
APPR: PAMLEK	2005/07/11		ANGULAR ± 5°		APPROVED BY	DATE	MOLEX INCORPORATED		
			DRAFT WHERE APPLICABLE MUST REMAIN WITHIN DIMENSIONS		RD	02/09/03			
REV	DESCRIPTION				MATERIAL NO.	DOCUMENT NO.	STEEL NO.		
					SEE CHART	SD-19164-027	1 OF 1		
					THIS DRAWING CONTAINS INFORMATION THAT IS PROPRIETARY TO MOLEX INCORPORATED AND SHOULD NOT BE USED WITHOUT WRITTEN PERMISSION				