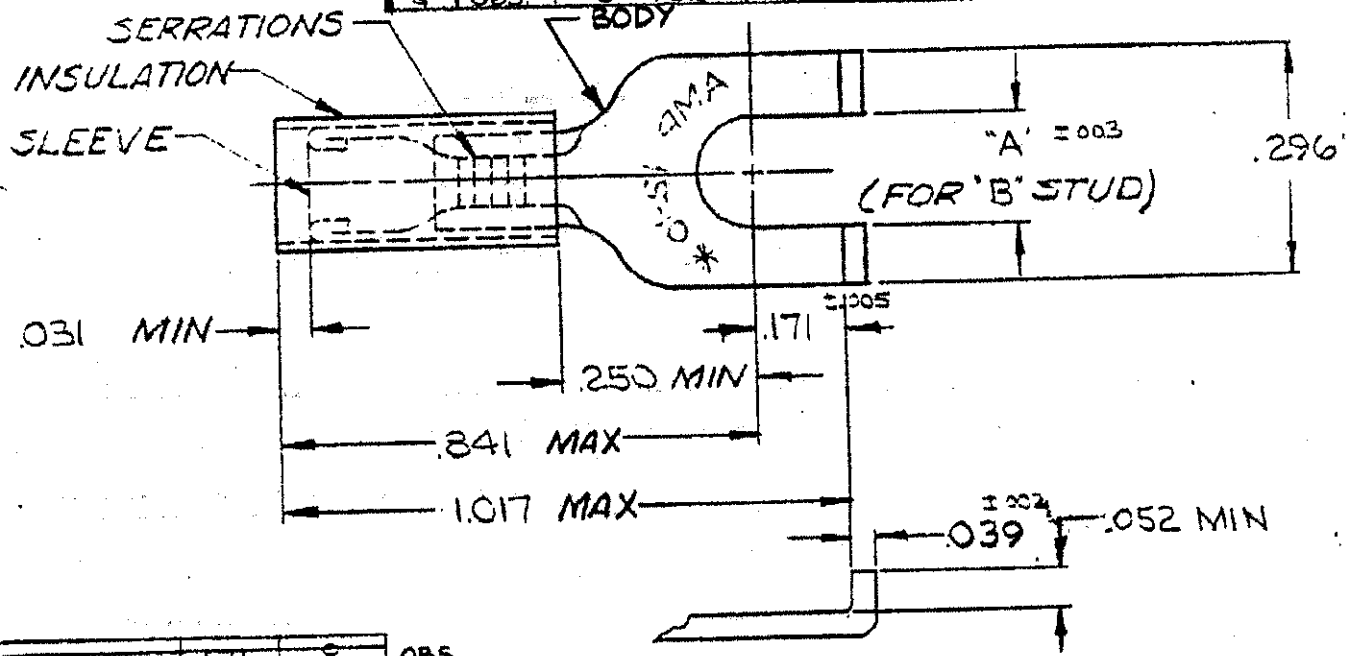


DRAWING MADE IN AMERICAN PROJECTION

© 1958 BY AMP INCORPORATED. ALL RIGHTS RESERVED. AMP PRODUCTS COVERED BY PATENTS AND/OR PATENTS PENDING.

REVISIONS			
LTR	DESCRIPTION	DATE	APPROVED
B	REDRAWN & ADDED TAPE NO'S P-6080 ^{MM}	5-13-76	<i>[Signature]</i>
C	REVISED F-636 & P-6925	9-9-74	P. Monahan
D	ADDED 1--1 NPS 76-0059	2-22-77	ZAB.
E	REV PER 6-4732	7/26/88	P.C.
F	OBS. 1--1 PER G-3992	1-31-89	<i>[Signature]</i>
G	OBS. 1--0 PER G-3782	3-30-89	GA

H	REV PER G-5646	DKS	MC	1/91
J	REV/0720-0066-93	TO	ME	4-93
K	REXIT-1-1/0610-0150-98 & ECR-05-001001	MC	10-2-98	



1-325150-0	.145	6
325150		
PART NO.	"A"	"B"

FOR .150 TO .250 WIRE INS. DIA.

1	WIRE TERMINAL	1-325150-1
1	325150 ON TAPE	1-325150-0
50	LOOSE PC. BOX	3-325150-2
1	WIRE TERMINAL	325150

SLEEVE: COPPER (QQ-C-576)
 BODY: COPPER (QQ-C-576)
 TIN PL (MIL-T-10727)
 INSULATION: NYLON
 COLOR: YELLOW

UNLESS OTHERWISE SPECIFIED DIMENSIONS ARE IN INCHES TOLERANCES ON: DECIMALS = .008 ANGLES = 5°	CONTRACT NO.	---
	DR.	5-13-70
	CHK.	5-13-70
	APPD	Label 5-13-70
	REL	5-13-70
MATERIAL	SEE TABLE	
OTHER APPD		

AMP AMP INCORPORATED HARRISBURG, PENNSYLVANIA

NAME: WIRE TERMINAL
 P.I.D.G.-FLANGED SPADE
 WIRE SIZE: 12-10

SIZE	CODE IDENT NO.	NUMBER
A	00779	325150

SCALE: NTS SHEET: 1 OF 1

CUSTOMER DRAWING