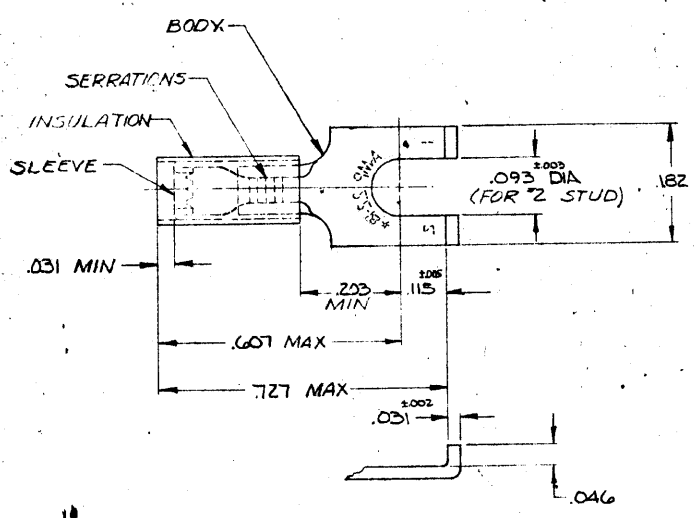


MADE IN AMERICAN PRODUCTION
 1967 BY AMP INCORPORATED. ALL RIGHTS RESERVED. AMP PRODUCTS COVERED BY PATENTS AND OR PATENTS PENDING.

REVISIONS				
ZONE	DATE	DESCRIPTION	DATE	APPROVED
P	1-15-70	REDRAWN #ADDED TAPE NO'S R608		RCY



FDR 'A' WIRE INS. DIA.
 MARKING 22-18 FOR MILITARY
 COMMERCIAL RANGE 22-16

TABLE I

1	WIRE TERMINAL	SEE TABLE II	SLEEVE: COPPER (22-C-576) BODY: COPPER (22-C-576) TIN PL. (A-1-10777) INSULATION: PVC COLOR: RED
QTY	DESCRIPTION	PART NO.	MATERIAL & FINISH
UNLESS OTHERWISE SPECIFIED DIMENSIONS ARE IN INCHES TOLERANCES ON: DECIMALS .005 ANGLES 5°		CONTRACT NO. ---	AMP INCORPORATED HARRISBURG, PENNSYLVANIA
MATERIAL SEE TABLE II		DR. <i>[Signature]</i> 1-14-70 CR. <i>[Signature]</i> 1-15-70 APPR. <i>[Signature]</i> 1-15-70 RE. <i>[Signature]</i> 1-20-70 DESGN APP'D <i>[Signature]</i>	NAME WIRE TERMINAL P.I.D.G. - FLANGED SPADE WIRE SIZE: 22-16
OTHER APPL:		SIZE B	CODE IDENT NO. 00779
		SCALE NTS	NUMBER 324608
			SHEET 1 OF 1

TABLE II

324608-2	080-.125	---
324608	105-.140	2-324608-1
PART NO.	'A'	TAPE NO.