

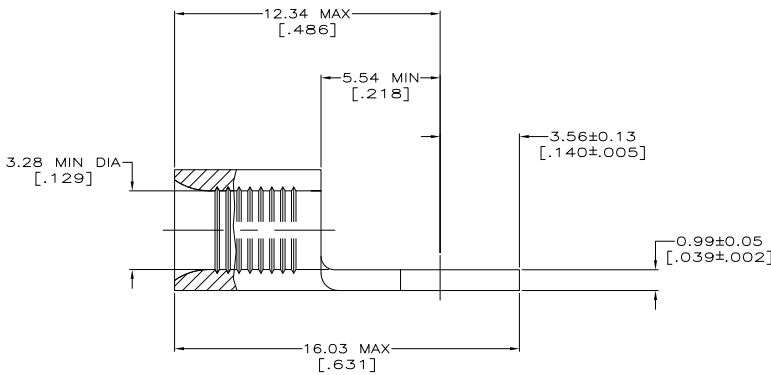
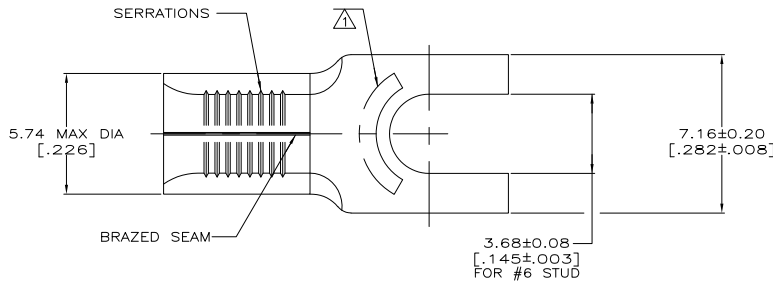
THE DRAWING IS UNPUBLISHED. RELEASED FOR PUBLICATION. ALL RIGHTS RESERVED.

LOC	QTY	REV	DESCRIPTION	DAP	DATE	DRW	APPV
G	14	P	LR				
		D1	REVISED PER ECO-11-004917		11MAR11	RK	HMR



AMP WIRE RANGE	E13288 Listed
12-10 AWG SOLID OR STRANDED	12-10 AWG STRANDED
LR7189 Certified	MILITARY P/N AND CLASS
12-10 AWG SOLID OR STRANDED	NOT APPLICABLE

STAMP AMP 12-10* APPROX AS SHOWN



AMP INCORPORATED CUSTOMER SERVICE SYSTEMS		MAX RECOMMENDED OPERATING TEMPERATURE: 170° C MAX
FOR ADDITIONAL PRODUCT INFORMATION OR COPIES OF DRAWINGS AND TECHNICAL DOCUMENTS	PRODUCT INFORMATION CENTER 1-800-522-6752	VOLTAGE RATING: NOT APPLICABLE
FOR APPLICATION TOOLING INFORMATION	TOOLING ASSISTANCE CENTER 1-800-722-1111	WIRE CROSS SECTIONAL AREA RANGE: 2.62-6.64mm ² [5,180-13,100] CIR MILS SOLID OR STRANDED
FOR ORDER ENTRY	1-800-526-5142	THIS DRAWING IS A CONTROLLED DOCUMENT FOR AMP INCORPORATED. IT IS SUBJECT TO CHANGE AND THE CONTROLLING ENGINEERING ORGANIZATION SHOULD BE CONTACTED FOR THE LATEST REVISION.

50	LOOSE PIECE, BOX	8-322451-2
---	LOOSE PIECE	322451
QUANTITY	PACKAGE TYPE	PART NO
THIS DRAWING IS A CONTROLLED DOCUMENT.		
BY TA BRINKMAN 3-28-93	CHK DA PATTERSON 3-28-93	DATE
BY DE MILLER 3-28-93	CHK	DATE
TE Connectivity		RESTRICTED TO
TERMINAL, SPADE TONGUE, SOLISTRAND™		---
MATERIAL COPPER PER ASTM B-152 ANNEALED	FINISH TIN PLATE 0.0025(±.000100) MIN THK PER MIL-T-10727	WEIGHT
CUSTOMER DRAWING		SCALE 3:1
SIZE A2	CAGE CODE 00779	DRAWING NO 322451
SHEET 1 of 1	REV D1	

1471-9 (5/11)

322451

A