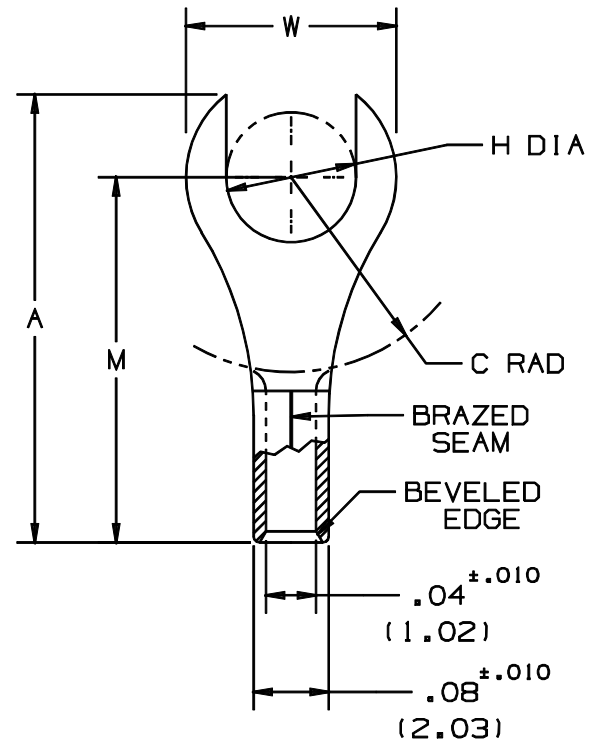


THIS COPY IS PROVIDED ON A RESTRICTED BASIS AND IS NOT TO BE USED IN ANY WAY DETRIMENTAL TO THE INTERESTS OF PANDUIT CORP.

| PANDUIT PART NUMBER | STUD SIZE | DIMENSIONS in. | | | | |
|------------------------|--------------|----------------|---------------|---------------|---------------|---------------|
| | | A $\pm .03$ | W $\pm .01$ | C $\pm .015$ | M $\pm .03$ | H $\pm .01$ |
| P22-2F | #2 | .49 (12.45) | .20 (5.08) | .19 (4.83) | .39 (9.91) | .10 (2.54) |



NOTES:

1. RECOMMENDED FOR #26-22 SOLID OR STRANDED COPPER WIRE
2. MATERIAL:
A. STAMPING - .020 (0.51) THK COPPER, TIN PLATED
3. PACKAGE QTY: STD. PKG. -C=100
BULK PKG. -M=1000
4. DIMENSIONS IN BRACKETS ARE IN MILLIMETERS
5. INSTALLATION TOOLS: CT-100, CT-200
6. WIRE STRIP LENGTH: 3/16 ^{1/32} .0 (4.8 ⁸ .0)

A41228_04

| | | | | | | | | | | | | | | |
|-----|------|-----|-----|------------------------------------|--|--|--|--|-----|----|-----------------|-------|---------------|-----------------------|
| | | | | | | | | PANDUIT CORP. TINLEY PARK, ILLINOIS | | | | | | |
| 04 | 1/01 | KMD | | CAD FILE SPEC. WAS N41228AA_PCD_03 | | | | #26-22 BARREL NON-INSULATED FORK TONGUE | | | | | | |
| 03 | 7/95 | MC | | UPDATED NOTES AND DIMENSIONS | | | | | | | | 03454 | | |
| REV | DATE | BY | CHK | DESCRIPTION | | | | ECN # | APP | PM | DRAWN BY DAW | CHK'D | SCALE NONE | DRAWING NO. A41228 |