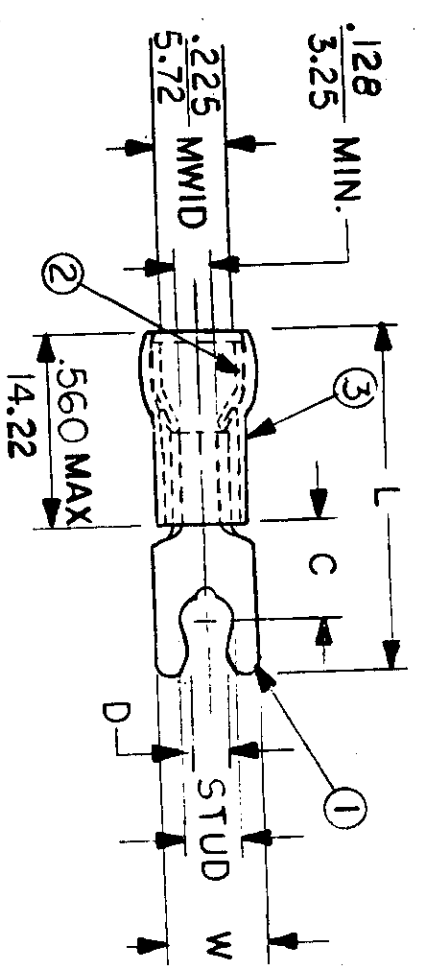


FILE NO.

C-CD-805-02

NOTES:

- ① MAT'L: COPPER (STOCK TKN. $\frac{.040}{.102}$)
 - ② PLATING: ELECTRO TIN (.0003 MIN) TIN-PLATED BRASS FUNNEL FERRULE
 - ③ NYLON INSULATION (COLOR CODED YELLOW)
- STUD SIZES: ($\pm .005$)
- 02 = .094
 04 = .119
 06 = .146
 08 = .173
 10 = .198
 14 = .265
 56 = .328
 38 = .390
- "UL" LISTING # E32244
 "CSA" LISTING # 18689
- WIRE SIZE: 12-10 AWG²
 4.0-6.0 MM²



ALL DIMENSIONS = $\frac{\text{INCHES}}{\text{MM}}$ (MWID) = DENOTES MAXIMUM WIRE INSULATION DIAMETER

PART NUMBER	"W" ±.010	"C" MIN.	"L" MAX.	"D" ±.005	AVAILABLE STUD SIZES
C-8710 -	$\frac{.250}{6.35}$	$\frac{.230}{5.84}$	$\frac{.970}{24.64}$	$\frac{.105}{2.68}$	05 ($\frac{.127 \pm .005}{.323}$)
C-8710 -	$\frac{.250}{6.35}$	$\frac{.230}{5.84}$	$\frac{.970}{24.64}$	$\frac{.114}{2.90}$	06
DIMENSIONAL TOLERANCES UNLESS OTHERWISE SPECIFIED					
FRAC.	DEC.	ANG.	REFERENCE	SCALE:	NTS
±	±	±		DRWN. BY:	JJ
				CHKD. BY:	GZ
				APPRD. BY:	
DATE			TITLE:		
11-13-84			SNAP SPADE SHORT TONGUE TERMINAL AVIKRIMP 800-SERIES		
11-26-84					
DWG. NO. A			CUSTOMER DWG		

