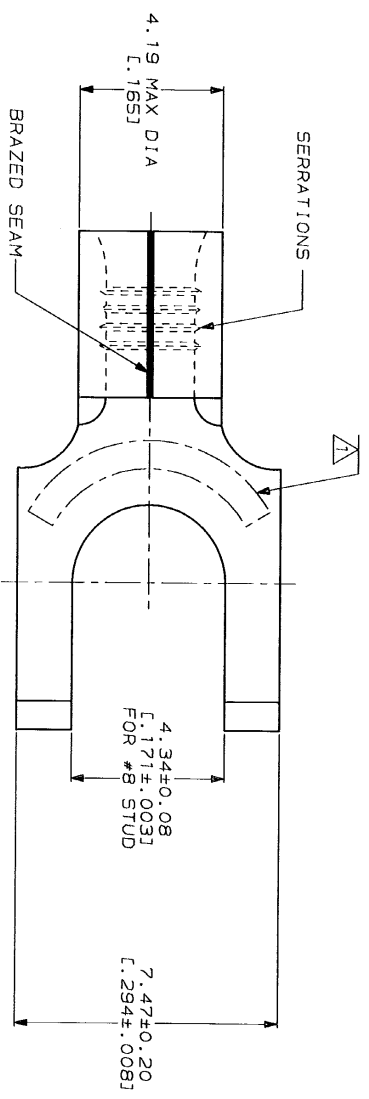


THIS DRAWING IS UNPUBLISHED.
 COPYRIGHT 1983 BY AMP INCORPORATED. ALL INTERNATIONAL RIGHTS RESERVED.

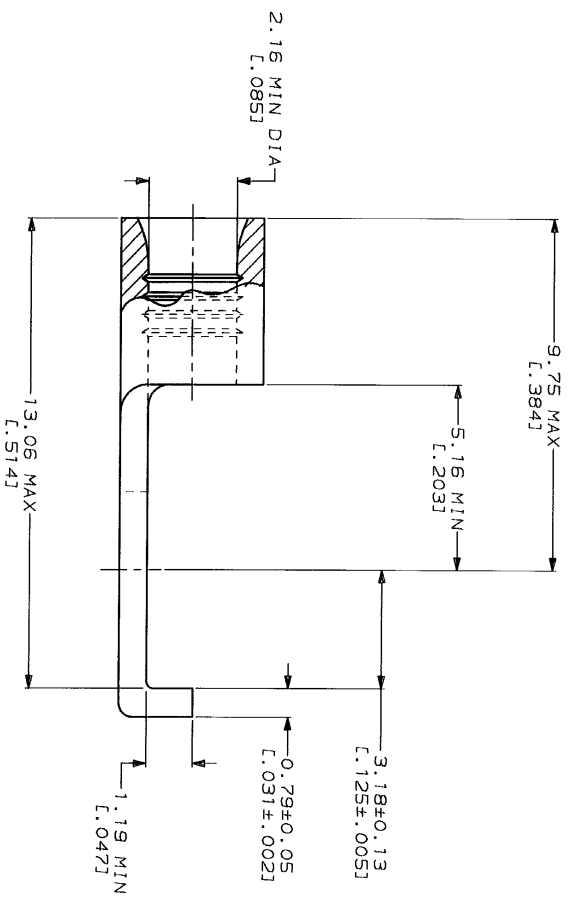
REV	DATE	APP'D
1	4-8-93	
2	4-8-93	
3	4-8-93	
4	4-8-93	
5	4-8-93	
6	4-8-93	
7	4-8-93	
8	4-8-93	
9	4-8-93	
10	4-8-93	
11	4-8-93	
12	4-8-93	
13	4-8-93	
14	4-8-93	
15	4-8-93	
16	4-8-93	
17	4-8-93	
18	4-8-93	
19	4-8-93	
20	4-8-93	



AMP WIRE RANGE 16-14 AWG SOLID OR STRANDED	UL E13288 Listed 16-14 AWG SOLID OR STRANDED
LR7189 Certified 16-14 AWG SOLID OR STRANDED	MILITARY P/N AND CLASS NOT APPLICABLE



STAMP AMP 16-14* APPROX AS SHOWN



AMP INCORPORATED
CUSTOMER SERVICE SYSTEMS

FOR ADDITIONAL
 PRODUCT INFORMATION OR
 COPIES OF DRAWINGS
 AND TECHNICAL DOCUMENTS
 FOR APPLICATION
 TOOLING INFORMATION
 FOR ORDER ENTRY

MAX RECOMMENDED OPERATING
 TEMPERATURE: 170°C MAX

DO NOT SCALE PRINT.
 DIMENSIONS SPECIFIED
 UNLESS SPECIFIED OTHERWISE
 TOLERANCES ON:
 2 PLC DEC ± .1
 3 PLC DEC ± .1
 ANGLES

DR 4-8-93
 TA BRINKMAN
 CHK 4-8-93
 DA PATTERSON
 APPD 4-8-93
 DE MILLER
 APPD 4-8-93
 JL WICKLEY
 PRODUCT SPEC

FINISH TIN PLATE
 0.00254 [L.000100] MIN
 THK PER MIL-T-10727

VOLTAGE RATINGS:
 NOT APPLICABLE

WIRE CROSS SECTIONAL AREA RANGE:
 1.04-2.62mm² [2.050-5.180] CIR MILS
 SOLID OR STRANDED

THE TOOLING IS A REGISTERED TRADEMARK FOR
 AMP AND THE CONTROLLING PATENTING ORGANIZATION
 SHOULD BE CONSULTED FOR THE LATEST REVISION

AMP 141-4 REV 2-82

QUANTITY	PACKAGING TYPE	PART NO
100	LOOSE PIECE, BOX	8-320856-1
5000	ON TAPE	2-320856-1
	LOOSE PIECE	320856

TERMINAL, FLANGED
 SPADE, SOLI STRAND™

SIZE CAGE CODE DRAWING NO
 00779 320856