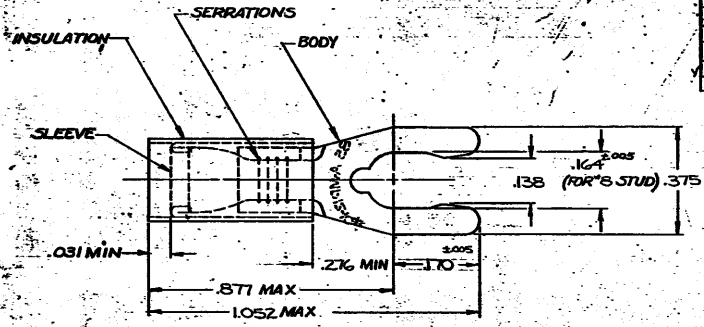


DRAWING MADE IN AMERICAN PROJECTION
 © 1971 BY AMP INCORPORATED. ALL RIGHTS RESERVED. AMP PRODUCTS COVERED BY PATENTS AND/OR PATENTS PENDING.

ZONE	LTR	DESCRIPTION	DATE	APPROVED
	O	NPS 71-0460	5-15-71	FCY
	A	ADDED TAPE NO.	11-22-71	Qm
	B	REVISED PER ECH R-5578	9-28-72	Qm
	C	REVISED P-6954	12-18-72	Qm
	D	REVISED G-3066	4-12-88	Q1
	E	REV PER G-5678	2/5/91	MCS/TK
	E	REV/O120-0049-93	3-18-93	TO/TK



FOR .150 TO .250 WIRE INS DIA
 TONGUE MATERIAL THK = .0385

ID	LOOSE PC. BOX	8-52942-1
1	52942 ON TAPE	52942-1
1	WIRE TERMINAL	52942
QTY DESCRIPTION PART NO.		MATERIAL FINISH
INSULATION: NIDON COLOR: YELLOW		
SLEEVE: COPPER (RQ-C-576)		
BODY: PHOSPHOR BRONZE (RQ-B-750)		
TIN PL (MIL-T-10727)		
MATERIAL FINISH		
CONTRACT NO.		AMP INCORPORATED HARRISBURG, PENNSYLVANIA
DATE: 11-22-71		NAME: WIRE TERMINAL
DATE: 11-22-71		R.I.D.G.-SPRING SPADE (STUB)
DATE: 9-20-71		WIRE SIZE: 12-10
DATE: 9-20-71		SIZE: B
DATE: 9-20-71		CODE IDENT NO.: 00779
DATE: 9-20-71		NUMBER: 52942
DATE: 9-20-71		SCALE: NTS
DATE: 9-20-71		SHEET: 1 OF 1