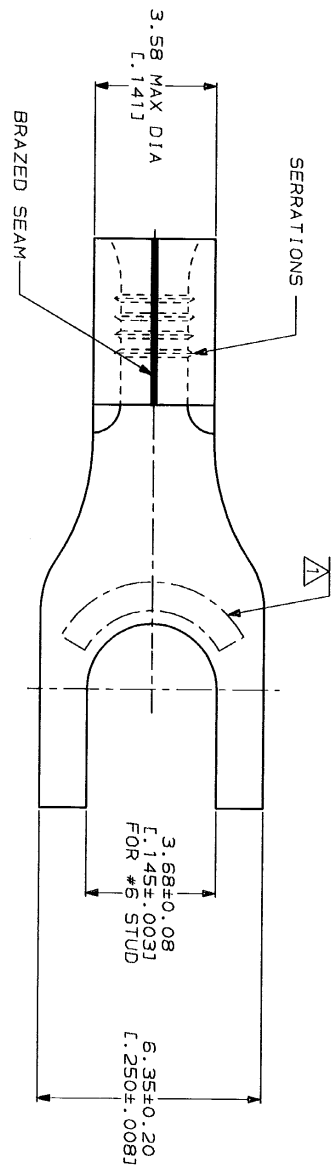
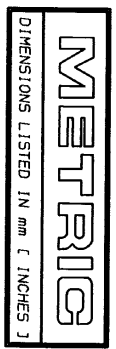
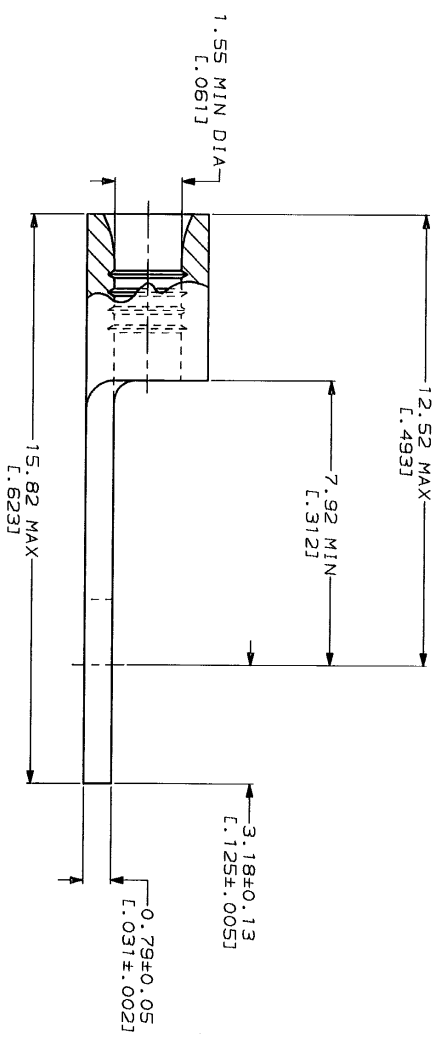


REV	DATE	APPROV	DESCRIPTION
1	3-26-93		REVISED TO PER 0720-0040-93
2			REVISED TO PER 0720-0040-93
3			REVISED TO PER 0720-0040-93
4			REVISED TO PER 0720-0040-93



<b>AMP</b> WIRE RANGE	<b>E13288</b> Listed
22-16 AWG SOLID OR STRANDED	22-16 AWG SOLID OR STRANDED
<b>LRT189</b> Certified	MILITARY P/N AND CLASS
22-16 AWG SOLID OR STRANDED	NOT APPLICABLE

△ STAMP AMP 22-18\* APPROX AS SHOWN  
 22-16 TERMINALS ARE STAMPED 22-18 IN  
 ACCORDANCE WITH MILITARY SPECIFICATION  
 MIL-T-7928, COMMERCIAL WIRE RANGE IS 22-16



**AMP INCORPORATED**  
**CUSTOMER SERVICE SYSTEMS**

FOR ADDITIONAL  
 PRODUCT INFORMATION OR  
 COPIES OF DRAWINGS  
 AND TECHNICAL DOCUMENTS  
 PRODUCT INFORMATION CENTER  
 1-800-522-6752

FOR APPLICATION  
 TOOLING ASSISTANCE CENTER  
 1-800-722-1111

FOR ORDER ENTRY  
 1-800-526-5142

MAX RECOMMENDED OPERATING  
 TEMPERATURE: 170°C MAX

VOLTAGE RATING:  
 NOT APPLICABLE

WIRE CROSS SECTIONAL AREA RANGE:  
 0.26-1.65mm<sup>2</sup> (S09-3, 2601 CIR MILS  
 SOL ID OR STRANDED)

DO NOT SCALE PRINT.  
 UNLESS SPECIFIED  
 DIMENSIONS ARE IN MILLIMETERS  
 2 PLG DEC # -  
 3 PLG DEC # -  
 ANGLES -  
 MATERIAL  
 COPPER PER  
 ASTM B-152  
 ANNEALED

FINISH  
 TIN PLATE  
 0.00254L.000100J MIN  
 THK PER MIL-T-10727

DR	TA	BR	CHK	DA	DE	JL	APPD	APPD	APPD
3-26-93	3-26-93	3-26-93	3-26-93	3-26-93	3-26-93	3-26-93	3-26-93	3-26-93	3-26-93
TA BRINKMAN	DA PATTERSON	DE MILLER	JL NECKLEY	APPD	APPD	APPD	APPD	APPD	APPD

QUANTITY	NAME	SIZE	CAGE CODE	DRAWING NO
100	LOOSE PIECE, BOX	00779	323127	323127
---	LOOSE PIECE	00779	323127	323127

**AMP**  
 AMP Incorporated  
 Herrsburg, PA 17105-3808

TERMINAL, SPAD  
 TONGUE, SOLI STRAND™

SCALE 10:1  
 SHEET 1 OF 1