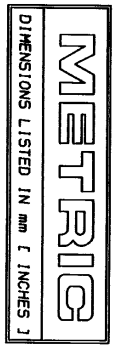
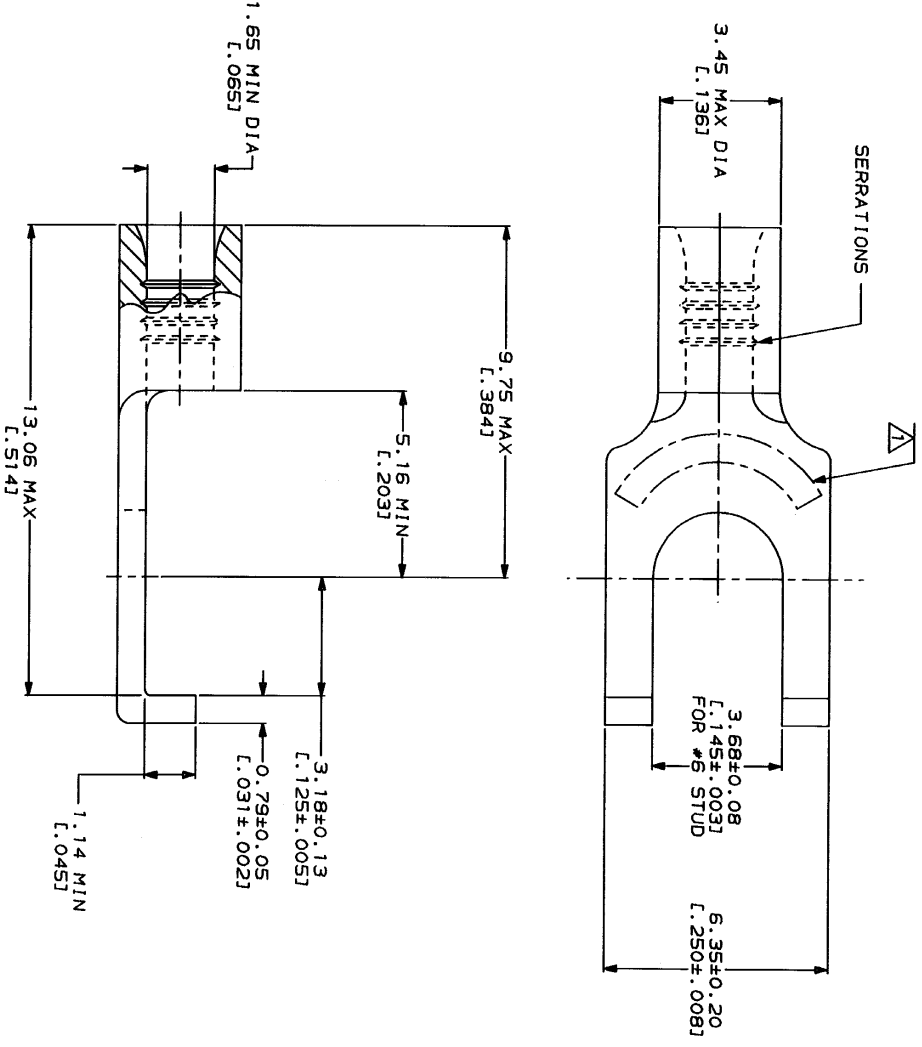


LOC	QTY	REV	ZONE	LYR	DESCRIPTION	DATE	APPD
G	14	A			REVISED PER 0720-0230-93		



<b>AMP</b> WIRE RANGE 22-16 AWG STRANDED	<b>UL</b> E13288 Listed 22-16 AWG STRANDED
LR7189 Certified	MILITARY P/N AND CLASS
NOT CERTIFIED	NOT APPLICABLE

△ STAMP AMP 22-18\* APPROX AS SHOWN  
22-16 TERMINALS ARE STAMPED 22-18 IN  
ACCORDANCE WITH MILITARY SPECIFICATION  
MIL-T-7928, COMMERCIAL WIRE RANGE IS 22-16



<b>AMP INCORPORATED CUSTOMER SERVICE SYSTEMS</b>		<b>MAX RECOMMENDED OPERATING TEMPERATURE:</b> 170°C MAX		<b>DO NOT SCALE PRINT. UNLESS SPECIFIED DIMENSIONS ARE DIMENSIONS ON 1 3 P.C DEC ± . ANGLES</b>		<b>OR 3-2-93 TA BRINKMAN CHK 3-2-93 DA PATTERSON</b>		<b>AMP</b> AMP Incorporated Horn-Lansurg, PA 17105-3608	
FOR ADDITIONAL PRODUCT INFORMATION OR COPIES OF DRAWINGS AND TECHNICAL DOCUMENTS 1-800-522-6752		VOLTAGE RATING: NOT APPLICABLE		FINISH TIN PLATE 0.00254(.000100) MIN THK PER MIL-T-10727		APPD 3-2-93 DE MILLER		NAME <b>AMP</b> TERMINAL, FLANGED SPADE, BUDGET	
FOR APPLICATION TOOLING INFORMATION 1-800-722-1111		WIRE CROSS SECTIONAL AREA RANGE: 0.26-1.65mm <sup>2</sup> (509-3,260) CIR MILS STRANDED		MATERIAL COPPER PER ASTM B-152 ANNEALED		APPD 3-2-93 JL HECKLEY		SIZE CASE CODE 00779	
FOR ORDER ENTRY 1-800-526-5142		THIS DRAWING IS A CONTROLLED DOCUMENT FOR MILITARY AND COMMERCIAL APPLICATIONS. IT IS THE PROPERTY OF AMP INCORPORATED AND IS NOT TO BE REPRODUCED OR COPIED IN ANY MANNER WITHOUT THE WRITTEN PERMISSION OF AMP INCORPORATED.		APPLICATION SPEC		APPD 3-2-93 JL HECKLEY		DRAWING NO 322776	