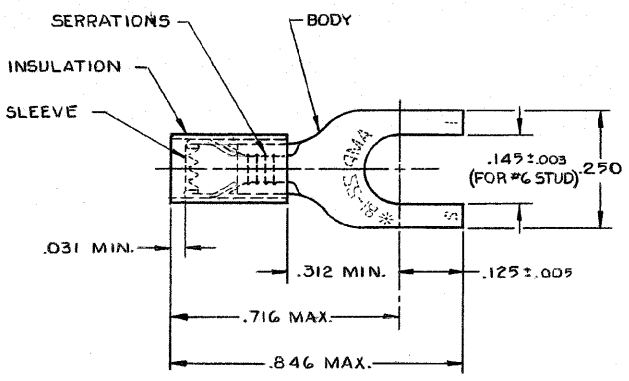


DRAWING MADE IN THIRD ANGLE PROJECTION
 THIS DRAWING IS UNPUBLISHED. RELEASED FOR PUBLICATION
 © COPYRIGHT 19 BY AMP INCORPORATED, HARRISBURG, PA. ALL INTERNATIONAL RIGHTS RESERVED. AMP PRODUCTS MAY BE COVERED BY U.S. AND FOREIGN PATENTS AND/OR PATENTS PENDING.

P	F	ZONE	LTR	DESCRIPTION	DATE	APPROVED
✓	✓		D	REDRAWN, REV. PER G-147C, G-1175, P85-0063 & P85-0064	12/80	<i>[Signature]</i>
✓	✓		E	OBSOLETE 2--3 PER G-2393	8/22/81	<i>[Signature]</i>
✓	✓		F	OBSOLETE 2--2 PER G-3358	4-22-81	<i>[Signature]</i>
✓	✓		G	REV PER G-4732	JT 8/2/81	<i>[Signature]</i>
			H	REV / G-019392	LO 2/82	<i>[Signature]</i>
			J	REV / 0720-0242-93	TG 3-9-93	<i>[Signature]</i>
			K	REV / 0610-0099-98	2-3-99	<i>[Signature]</i>
			L	Added - 1-8-24 P82 063A-034-00		<i>[Signature]</i>
			M	REV PER 063A-0274-01		<i>[Signature]</i>



- 1 WIRE INSULATION DIA. = .105-.140
- 2 TONGUE MATERIAL THK. = .031 ± .002
- 3 22-18 MARKING FOR MILITARY, COMMERCIAL RANGE 22-16
- △ TIN PLATE (ASTM B 595) .000100 MIN THK.
- △ PRELIMINARY - NOT FOR PRODUCTION
- △ SUPERSEDED BY 8-34541-1

COLOR	QTY.	DESCRIPTION	PART NO
RED	50	LOOSE PIECE, BAG	8-34541-5
RED	100	LOOSE PIECE, BOX	8-34541-1
BLACK	5,000	34541-1 ON TAPE, REEL	△ 2-34541-4
OBSOLETE RED	100	ON TAPE, SM. BOX	2-34541-3
OBSOLETE RED	1,000	ON TAPE, LG. BOX	2-34541-2
RED	5,000	34541 ON TAPE, REEL	2-34541-1
BLACK	-#	LOOSE PIECE	△ 34541-1
RED	-#	LOOSE PIECE	34541

UNLESS OTHERWISE SPECIFIED DIMENSIONS ARE IN INCHES. TOLERANCES ON: DECIMALS ± .008 ANGLES ±		CONTRACT NO DR UTA/RFB 9-24-85		AMP INCORPORATED Harrisburg, Pa.	
MATERIAL: INSULATION: WYLOH-RED BODY & SLEEVE: COPPER PER (ASTM B 152)		CHK P. Muthalingam	NAME TERMINAL, PIDG™ SPADE WIRE SIZE: 22-16		
FINISH BODY: △	OTHER APPD	SIZE B	FSCM NO 00779	DRAWING NO 34541	
		SCALE NTS		SHEET 1 OF 1	

CUSTOMER DRAWING