

4

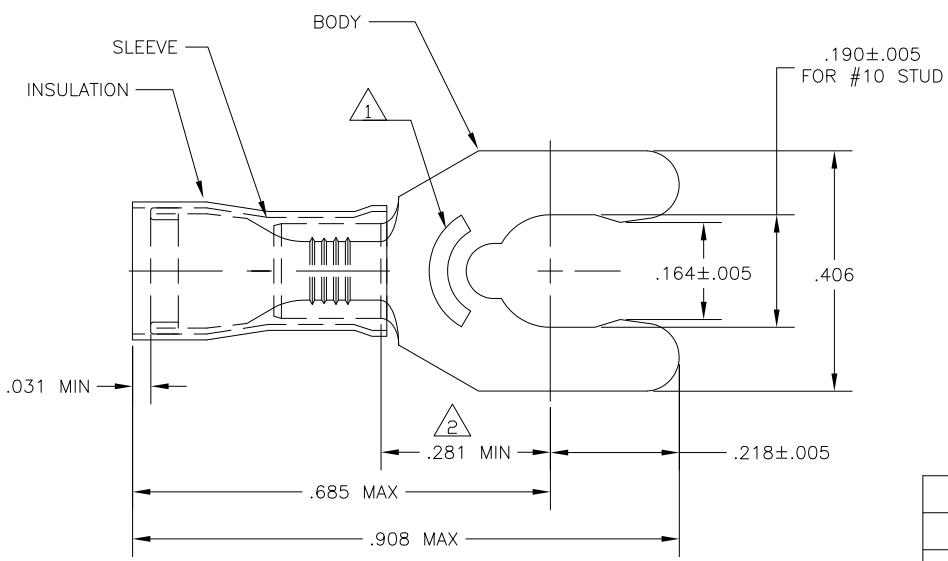
3

2

1

THIS DRAWING IS UNPUBLISHED. RELEASED FOR PUBLICATION
 © COPYRIGHT - By - ALL RIGHTS RESERVED.

| LOC | DIST | REVISIONS | | | |
|-----|------|-------------|---------------------------|---------|--------|
| P | LTR | DESCRIPTION | DATE | DWN | APVD |
| G | 14 | H2 | REVISED PER ECO-11-004917 | 11MAR11 | RK HMR |



- 1 STAMP 10S AMP 16-14*, APPROX AS SHOWN.
- 2 APPLIES FROM EDGE OF METAL WIRE BARREL TO CENTER OF STUD HOLE.
- 3 TONGUE MATERIAL THK IS .031±.002
- 4 BODY - PHOS BRONZE PER ASTM B-103
SLEEVE - COPPER PER ASTM B-152
INSULATION - NYLON
- 5 BODY - TIN PLATE PER ASTM B545
SLEEVE - TIN PLATE PER ASTM B545
INSULATION - COLOR - BLUE

| | | |
|--------------------------------|--------------------------------|--------------------------------|
| AMP WIRE RANGE | Listed FILE E13288 | LR7189 Certified |
| 16-14 AWG SOLID OR STRANDED | 16-14 AWG SOLID OR STRANDED | 16-14 AWG SOLID OR STRANDED |

| WIRE | INSULATION | QTY | PACKAGE TYPE | PART NO |
|-----------|------------|------|------------------|-----------|
| .115-.182 | | 100 | LOOSE PIECE, BOX | 9-52937-1 |
| .115-.170 | | 100 | LOOSE PIECE, BOX | 7-52937-1 |
| .115-.182 | | 5000 | -2 ON TAPE | 52937-3 |
| .115-.182 | | 1000 | LOOSE PIECE | 52937-2 |
| .115-.170 | | 5000 | -1 ON TAPE | 52937-1 |
| .115-.170 | | 1000 | LOOSE PIECE | 52937 |

| | | |
|--|--|---|
| CUSTOMER SERVICE SYSTEMS | | MAX RECOMMENDED OPERATING TEMPERATURE: 105°C |
| FOR ADDITIONAL PRODUCT INFORMATION OR COPIES OF DRAWINGS AND TECHNICAL DOCUMENTS | PRODUCT INFORMATION CENTER 1-800-522-6752 | VOLTAGE RATING: 300 V MAX |
| FOR APPLICATION TOOLING INFORMATION | TOOLING ASSISTANCE CENTER 1-800-722-1111 | CIRCULAR MIL AREA: 1.04-2.62mm ² [2,050-5,180] SOLID OR STRANDED |
| FOR ORDER ENTRY | 1-800-526-5142 | THIS DRAWING IS A CONTROLLED DOCUMENT FOR AMP INCORPORATED. IT IS SUBJECT TO CHANGE AND THE CONTROLLING ENGINEERING ORGANIZATION SHOULD BE CONTACTED FOR THE LATEST REVISION. |

| | |
|--|---|
| THIS DRAWING IS A CONTROLLED DOCUMENT. | |
| DIMENSIONS: INCHES | TOLERANCES UNLESS OTHERWISE SPECIFIED: |
| | 0 PLC ± - |
| | 1 PLC ± - |
| | 2 PLC ± - |
| | 3 PLC ± .008 |
| | 4 PLC ± - |
| | ANGLES ± 5° |
| MATERIAL | FINISH |
| 4 | 5 |

| | | | |
|---------------------------------|--|-----------|------------|
| DWN jr ruth 19MAR10 | TE Connectivity | | |
| CHK T MICHELUTTI 19MAR10 | NAME | | |
| APVD T MICHELUTTI 19MAR10 | TERMINAL, SHORT SPRING SPADE, PIDG, WIRE SIZE: 16-14 AWG | | |
| PRODUCT SPEC | SIZE | CAGE CODE | DRAWING NO |
| APPLICATION SPEC | A3 | 00779 | C-52937 |
| WEIGHT | RESTRICTED TO | | REV |
| CUSTOMER DRAWING | SCALE | SHEET | H2 |
| | 6:1 | 1 of 1 | |