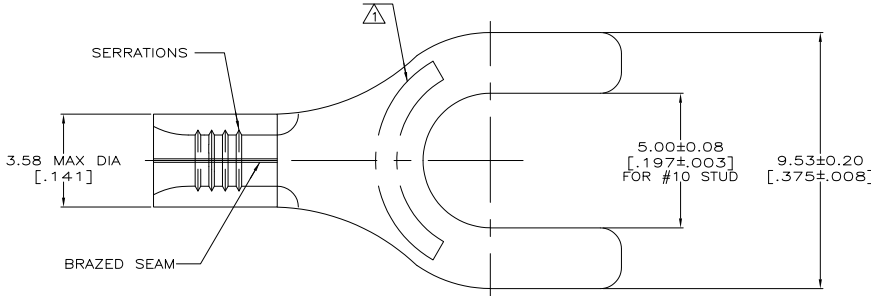


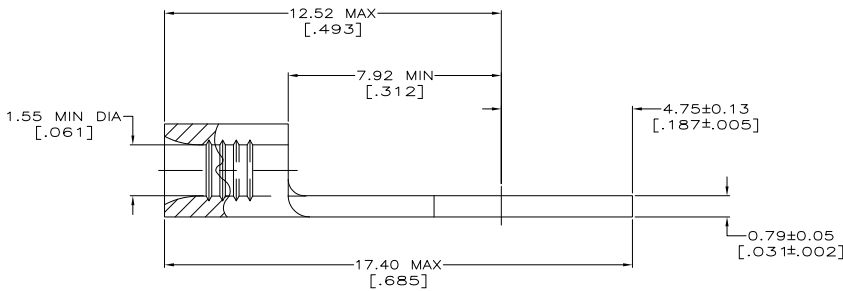
THE DRAWING IS UNPUBLISHED. RELEASED FOR PUBLICATION. ALL RIGHTS RESERVED.

LOC	QTY	REV	DESCRIPTION	DAP	DATE	OWN	APPV
G	14	F1	REVISED PER ECO-11-004917		11MAR11	RK	HMR



<b>AMP</b> WIRE RANGE 22-16 AWG SOLID OR STRANDED	E13288 Listed 22-16 AWG SOLID OR STRANDED
LR7189 Certified 22-16 AWG SOLID OR STRANDED	MILITARY P/N AND CLASS NOT APPLICABLE

△ STAMP AMP 22-18\* APPROX AS SHOWN  
22-16 TERMINALS ARE STAMPED 22-18 IN  
ACCORDANCE WITH MILITARY SPECIFICATION  
MIL-T-7928; COMMERCIAL WIRE RANGE IS 22-16



<b>AMP INCORPORATED CUSTOMER SERVICE SYSTEMS</b>		MAX RECOMMENDED OPERATING TEMPERATURE: 170° C MAX
FOR ADDITIONAL PRODUCT INFORMATION OR COPIES OF DRAWINGS AND TECHNICAL DOCUMENTS	PRODUCT INFORMATION CENTER 1-800-522-6752	VOLTAGE RATING: NOT APPLICABLE
FOR APPLICATION TOOLING INFORMATION	TOOLING ASSISTANCE CENTER 1-800-722-1111	WIRE CROSS SECTIONAL AREA RANGE: 0.26-1.65mm <sup>2</sup> [509-3,260] CIR MILS SOLID OR STRANDED
FOR ORDER ENTRY	1-800-526-5142	THIS DRAWING IS A CONTROLLED DOCUMENT FOR AMP INCORPORATED. IT IS SUBJECT TO CHANGE AND THE CONTROLLING ENGINEERING ORGANIZATION SHOULD BE CONTACTED FOR THE LATEST REVISION.

100	LOOSE PIECE, BOX SPECIAL (NO WINDOW)	8-34118-5
5000	ON TAPE	2-34118-2
---	LOOSE PIECE	34118
QUANTITY	PACKAGING TYPE	PART NO

THIS DRAWING IS A CONTROLLED DOCUMENT.		BY TA BRINKMAN 3-28-93	TE Connectivity
DIMENSIONS: MM(INCHES)		CHK DA PATTERSON 3-28-93	
TOLERANCES UNLESS OTHERWISE SPECIFIED:		APR DE MILLER 3-28-93	NAME TERMINAL, SPADE TONGUE, SOLISTRAND™
MATERIAL: COPPER PER ACTM D-152 ANNEALED		PRODUCT SPEC APPLICATION SPEC	SIZE A2
FINISH: TIN PLATE 0.00254(0.00100) MIN THK PER MIL-T-10727		WEIGHT	DRAWING NO 00779
		CUSTOMER DRAWING	SCALE 10:1
			SHEET 1 of 1
			REV F1

1471-9 (3/11)

34118

A