

4

3

2

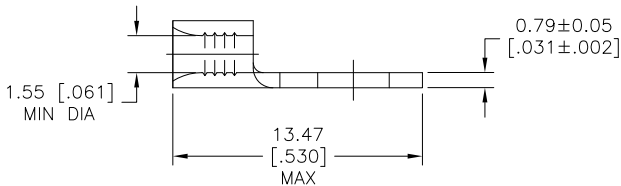
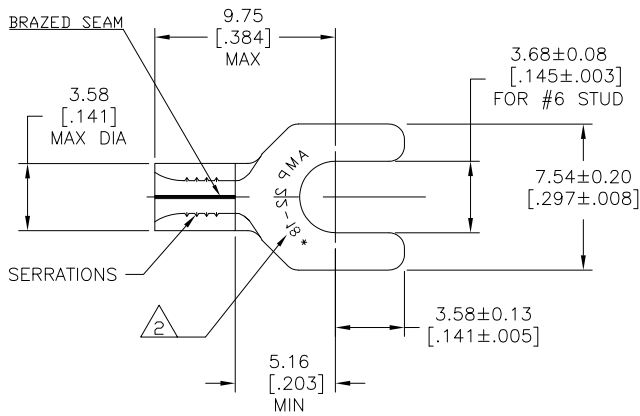
1

THIS DRAWING IS UNPUBLISHED. RELEASED FOR PUBLICATION
 © COPYRIGHT - BY TYCO ELECTRONICS CORPORATION. ALL INTERNATIONAL RIGHTS RESERVED.

LOC	DIST	REVISIONS					
		P	LTR	DESCRIPTION	DATE	DWN	APVD
G	14	G1		REV PER ECR 09-023200	27OCT09	JR	TM

AMP WIRE RANGE	Listed FILE E13288	LR7189 Certified
22-16 AWG SOLID OR STRANDED	22-16 AWG SOLID OR STRANDED	22-16 AWG SOLID OR STRANDED

- 1 HEAT TREATMENT: ANNEALED
- 2 STAMP AMP 22-18*, APPROX AS SHOWN
22-16 TERMINALS ARE STAMPED 22-18
IN ACCORDANCE WITH MILITARY SPEC
MIL-T-7928, COMMERCIAL WIRE
RANGE IS 22-16.
- 3 COPPER PER ASTM B-152
- 4 0.00254 [.000100] MIN THK TIN PLATE
PER ASTM B-545



100	LOOSE PIECE, BOX	8-36195-1
5000	ON TAPE	2-36195-3
--	LOOSE PIECE	36195
QTY	PACKAGING TYPE	PART NO

AMP INCORPORATED CUSTOMER SERVICE SYSTEMS		MAX RECOMMENDED OPERATING TEMPERATURE: 170°C MAX	THIS DRAWING IS A CONTROLLED DOCUMENT.		DWN 3/26/93 TA BRINKMAN	Tyco Electronics Corporation Harrisburg, PA 17105-3608	
FOR ADDITIONAL PRODUCT INFORMATION OR COPIES OF DRAWINGS AND TECHNICAL DOCUMENTS	PRODUCT INFORMATION CENTER 1-800-522-6752	VOLTAGE RATING: N/A	DIMENSIONS: mm [INCHES]	TOLERANCES UNLESS OTHERWISE SPECIFIED:	CHK 3-26-93 DA PATTERSON	NAME JL MECKLEY	
FOR APPLICATION	TOOLING ASSISTANCE CENTER 1-800-722-1111	CIRCULAR MIL AREA: 0.26-1.65mm² [509-3,260] SOLID OR STRANDED		0 PLC ± - 1 PLC ± - 2 PLC ± 0.20 [.008] 3 PLC ± - 4 PLC ± - ANGLES ± -	APVD 3-26-93 JL MECKLEY	PRODUCT SPEC	
TOOLING INFORMATION	1-800-526-5142	THIS DRAWING IS A CONTROLLED DOCUMENT FOR AMP INCORPORATED. IT IS SUBJECT TO CHANGE AND THE CONTROLLING ENGINEERING ORGANIZATION SHOULD BE CONTACTED FOR THE LATEST REVISION.	MATERIAL	FINISH	APPLICATION SPEC	SIZE	CAGE CODE
FOR ORDER ENTRY	1-800-526-5142				WEIGHT	A3	00779
					CUSTOMER DRAWING	DRAWING NO	36195
						RESTRICTED TO	
						SCALE	5:1
						SHEET	1 OF 1
						REV	G1

1470-19 (1/08)