

4

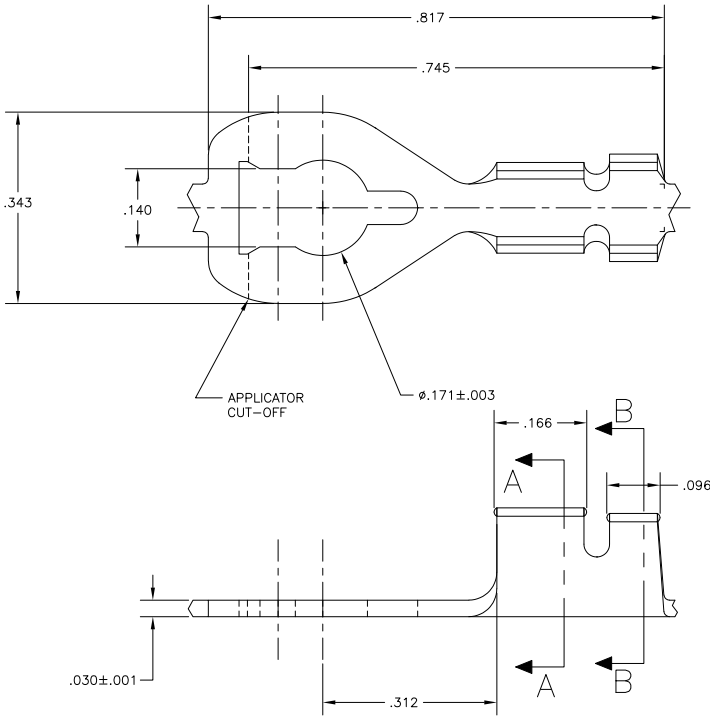
3

2

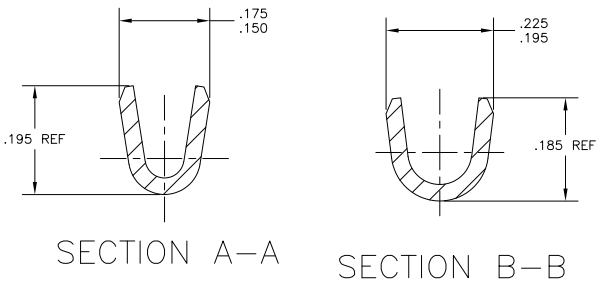
1

THIS DRAWING IS UNPUBLISHED. RELEASED FOR PUBLICATION
 © COPYRIGHT 1984 BY TYCO ELECTRONICS CORPORATION. ALL RIGHTS RESERVED.

LOC	DIST	REVISIONS			
P	LTR	DESCRIPTION	DATE	BY	APP'D
AF	50				
S		REVISED PER ECR-10-006099	07JUL10	HMR	PD



1. CONTINUOUS STRIP ON REELS.
2. WIRE RANGE: #18-#14 AWG.
3. INSULATION RANGE: .100-.140 DIA.
- 4 FOREIGN PRODUCTION ONLY.
- 5 OBSOLETE PARTS: OBSOLETE CIS STREAMLINING PER D.RENAUD/D.SINISI



OBSOLETE	TIN	H03 PHOSPHOR BRONZE	42168-3
	TIN	H03 BRASS	42168-2
5 OBSOLETE	-	H03 BRASS	42168-1
	FINISH	MATERIAL	PART NUMBER

THIS DRAWING IS A CONTROLLED DOCUMENT.

DIMENSIONS: INCHES 0 PL C ± .005 1 PL C ± .005 2 PL C ± .005 3 PL C ± .015 4 PL C ± .015 ANGLES ± .1°	OTHER DIMENSIONS: 0 PL C ± .005 1 PL C ± .005 2 PL C ± .005 3 PL C ± .015 4 PL C ± .015 ANGLES ± .1°	DWG: MICHAEL S. FEYER CHK: DONALD F. DECKER APP: DONALD F. DECKER PRODUCT SPEC:	Tyco Electronics Corporation Harrisburg, PA 17105-3608 TERMINAL, SPRING SPADE #8 STUD,	SIZE: A2 CASE CODE: 00779 DRAWING NO: C=42168	RESTRICTED TO:
MATERIAL: SEE TABLE	FINISH: SEE TABLE	CUSTOMER DRAWING	SCALE: 8:1	SHEET: 1 OF 1	REV: S

AMP 1471-9 REV 31MM2000

142168