

4

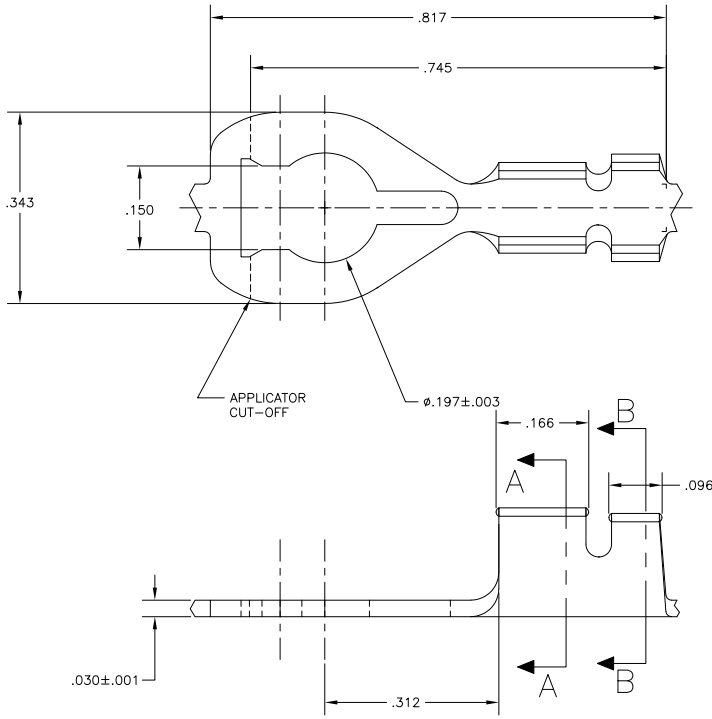
3

2

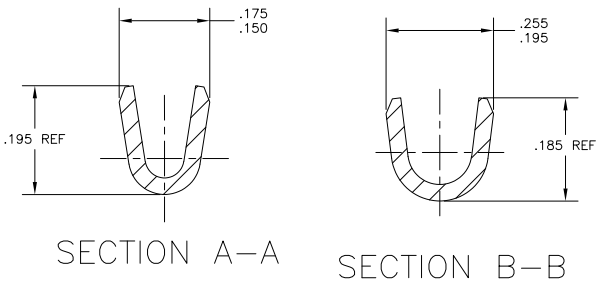
1

THIS DRAWING IS UNPUBLISHED. RELEASED FOR PUBLICATION
 © COPYRIGHT 1984 BY TYCO ELECTRONICS CORPORATION. ALL RIGHTS RESERVED.

LOC	DIST	REVISIONS			
P	LTR	DESCRIPTION	DATE	BY	APPD
AF	50	S	REVISED PER ECR-10-006099	07JUL10	HMR PD



1. CONTINUOUS STRIP ON REELS.
2. WIRE RANGE: #18-#14 AWG.
3. INSULATION RANGE: .100-.140 DIA.



TIN	42169-2
-	42169-1
FINISH	PART NUMBER

THIS DRAWING IS A CONTROLLED DOCUMENT.

DIMENSIONS: INCHES 0 PLG ± .005 1 PLG ± .005 2 PLG ± .005 3 PLG ± .015 4 PLG ± .015 ANGLES ± .1°	TYPICAL DIMENSIONS OTHERS AS NOTED	DWG: MICHAEL S. FEYER CHK: DONALD F. DECKER APP: DONALD F. DECKER PRODUCT SPEC:	Tyco Electronics Corporation Harrisburg, PA 17105-3608
MATERIAL: HD3 BRASS FINISH: SEE TABLE		APPLICATION SPEC: - WEIGHT: - CUSTOMER DRAWING	NAME: - SIZE: A2 CASE CODE: 00779 DRAWING NO: C=42169 RESTRICTED TO: - SCALE: 8:1 SHEET: 1 OF 1 REV: S

AMP 1471-9 REV 31MM2000

42169