

4

3

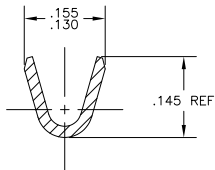
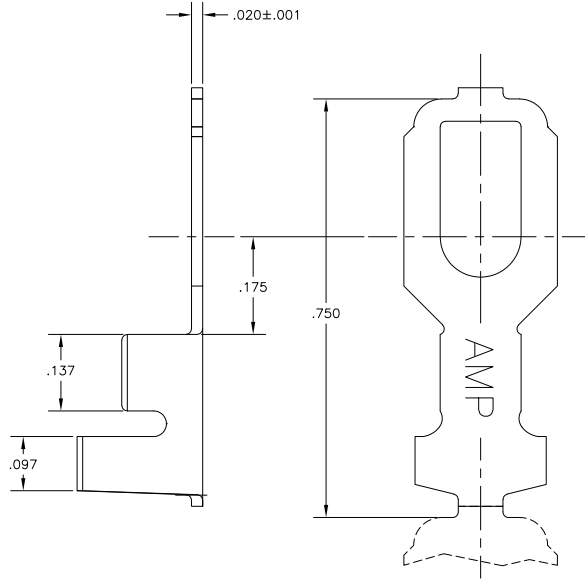
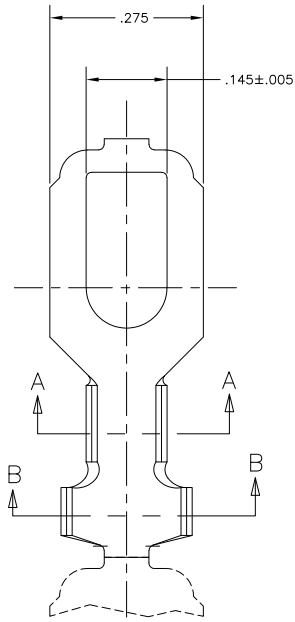
2

1

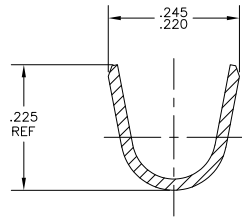
THIS DRAWING IS UNPUBLISHED. RELEASED FOR PUBLICATION
 © COPYRIGHT BY TYCO ELECTRONICS CORPORATION. ALL RIGHTS RESERVED.

LOC		DIBT		REVISIONS			
P	LTR	DESCRIPTION	DATE	BY	APP'D		
AF	50						
	G	REVISED PER ECR-10-006099	07JUL10	HMR	PD		

1. CONTINUOUS STRIP ON REELS.
2. WIRE SIZE: #18-#14 AWG.
3. INSULATION RANGE: .130-.180 DIA.



SECTION A-A



SECTION B-B

60725-1
PART NUMBER

THIS DRAWING IS A CONTROLLED DOCUMENT.		2006C2004	Tyco Electronics Corporation	
DRAWN BY: MICHAEL S. FEYER		04JAN2005	Harrisburg, Pa 17105-3608	
CHECKED BY: DONALD F. DECKER		04JAN2005	Tyco Electronics	
APPROVED BY: DONALD F. DECKER		04JAN2005	NAME	
PRODUCT SPEC: _____		APPLICATION SPEC: _____	SIZE: _____	CAGE CODE: _____
MATERIAL: 082 BRASS		FINISH: TIN	DRAWING NO: A2 00779 C-60725	RESTRICTED TO: _____
DIMENSIONS: INCHES		OTHER DIMENSIONS: _____		
0 PLC	8	1	1	1
1 PLC	8	1	1	1
2 PLC	8	1	1	1
3 PLC	8	1	1	1
4 PLC	8	1	1	1
ANGLES	8	1	1	1
CUSTOMER DRAWING		SCALE: 8:1	SHEET: 1 of 1	REV: G

60725

A