

4

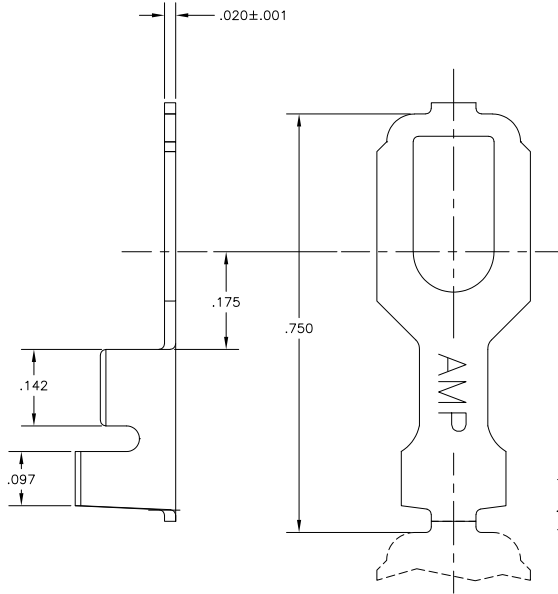
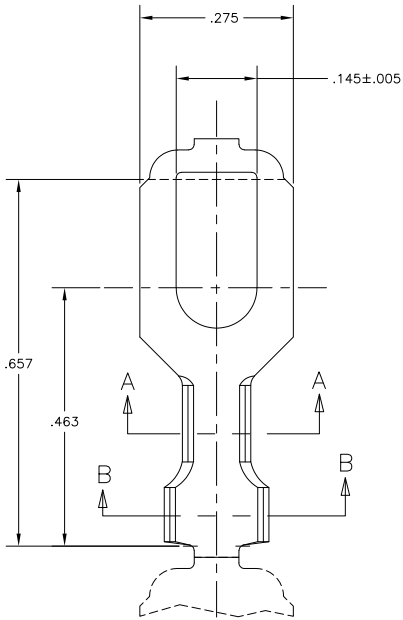
3

2

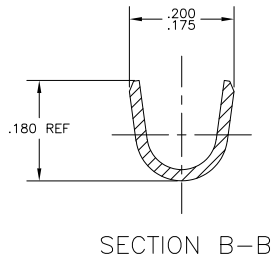
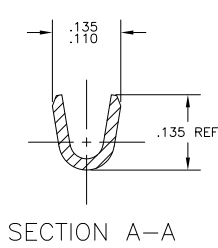
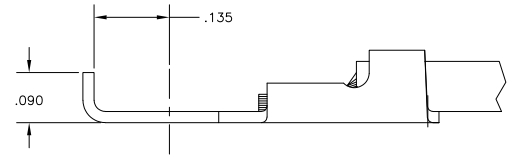
1

THIS DRAWING IS UNPUBLISHED. RELEASED FOR PUBLICATION  
 © COPYRIGHT BY TYCO ELECTRONICS CORPORATION. ALL RIGHTS RESERVED.

LOC	DIST	REVISIONS			
P	LTR	DESCRIPTION	DATE	BY	APP'D
AF	50				
		C	REVISED PER ECR-10-006099	07JUL10	HMR PD



- 1 CONTINUOUS STRIP ON REELS.
  - 2 WIRE SIZE: #20-#16 AWG.
  - 3 INSULATION RANGE: .090-.130 DIA.
- ⚠ SUFFIX LETTER MUST BE USED ONLY WHEN ORDERING APPLICATOR TOOLING.



FLANGED	40763-A
FLAT	40763
STYLE	PART NUMBER
Tyco Electronics Corporation Harrisburg, Pa 17105-3608	
TERMINAL, SPADE 6 STUD SIZE	
SIZE	CAGE CODE DRAWING NO
A2	00779 C=40763
CUSTOMER DRAWING	RESTRICTED TO
SCALE: 8:1	SHEET 1 OF 1 REV C

THIS DRAWING IS A CONTROLLED DOCUMENT.		2006C2004
DRAWN BY: MICHAEL S. FEYER		04JAN2005
CHECKED BY: DONALD F. DECKER		04JAN2005
APPROVED BY: DONALD F. DECKER		04JAN2005
MATERIAL: 082 BRASS		FINISH: TIN
DIMENSIONS: INCHES		OTHER DIMENSIONS: MILLIMETERS
0 PLC	± .005	
1 PLC	± .005	
2 PLC	± .005	
3 PLC	± .010	
4 PLC	± .010	
ANGLES	± .1°	

40763

A