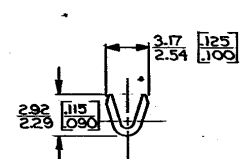
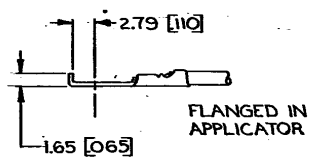
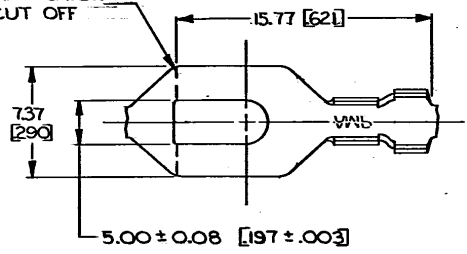


DRAWING MADE IN THIRD ANGLE PROJECTION

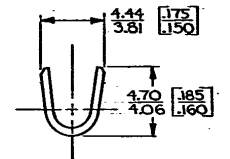
© COPYRIGHT 1964 BY AMP INCORPORATED, HARRISBURG, PA.
 ALL INTERNATIONAL RIGHTS RESERVED. AMP INCORPORATED PRODUCTS
 COVERED BY U. S. AND FOREIGN PATENTS AND/OR PATENTS PENDING.

P		ZONE		LTR		REVISIONS		LOC	DIST
						DESCRIPTION	DATE	APPROVED	
2		L				REDRAWN & REVISED	A-3943	5-15-78	SS/

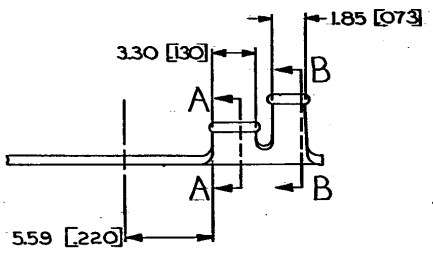
APPLICATOR
CUT OFF



SECT A-A



SECT B-B



*10	0.2-0.6 mm ² [24-20]	203-2.57 [.080-.100]	TIN	0.51 [020] BRASS	41590 A
STUD SIZE	WIRE RANGE	INSULATION RANGE	FINISH	MATERIAL	PART NO 41590

- CONTINUOUS STRIP ON REELS.
- DIMENSIONS IN BRACKETS ARE IN INCHES.
- SUFFIX LETTER MUST BE USED ONLY WHEN ORDERING APPLICATOR TOOLING.

METRIC

UNLESS OTHERWISE SPECIFIED DIMENSIONS ARE IN INCHES (***). TOLERANCES ON: DECIMALS ±.03 [015] ANGLES ±1°		CONTRACT NO	AMP INCORPORATED Harrisburg, Pa.	
MATERIAL	SEE TABLE	DR: <i>A. Meyer</i> 5-15-78	NAME SPADE	
FINISH	SEE TABLE	CHK: <i>L. J. Hoffmann</i> 7-25-78	SIZE	CODE IDENT NO
		APPD: <i>R. J. Smith</i> 8-1-78	B	00779
		APPD: <i>La. T. La. B. 8-1-78</i>	DRAWING NO	41590
		DSGN APPD	SCALE	SHEET
		OTHER APPD		

CUSTOMER DRAWING