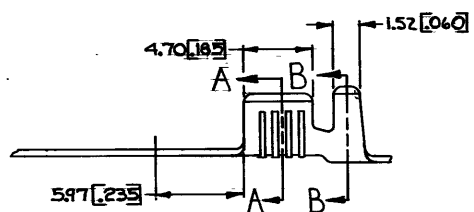
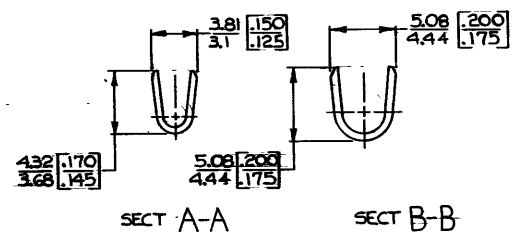
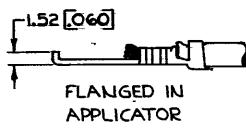
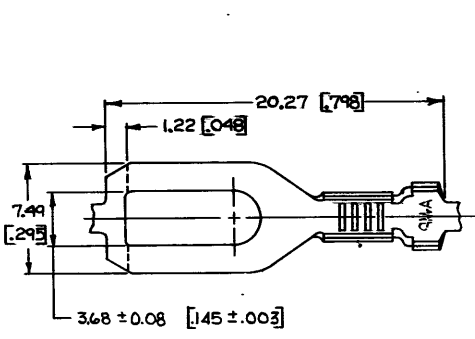


DRAWING MADE IN THIRD ANGLE PROJECTION

© COPYRIGHT 1964 BY AMP INCORPORATED, HARRISBURG, PA.
ALL INTERNATIONAL RIGHTS RESERVED. AMP INCORPORATED PRODUCTS
COVERED BY U. S. AND FOREIGN PATENTS AND/OR PATENTS PENDING.

REVISIONS					
P	ZONE	LTR	DESCRIPTION	DATE	APPROVED
			D REDRAWN & REVISED A-3943	6/2/78	DEB/SS
			E INSUL. SUPP LENGTH AF 0781	2/20/83	RSJ/GY
			F REVISED AF 1994	7/1/86	SS/REF
		4	OBS - 1	AF-4503 5/1/88	GY



M 3.5 # 6	0.8 - 2.0mm ² [18 - 14]	2.54 - 3.56 [100 - 140]	TIN NONE	0.46 [0.018] BRASS	60773-2A 60773-2 60773-1A 60773-F
STUD SIZE	WIRE SIZE	INSULATION RANGE	FINISH	MATERIAL	PART NO

OBsolete

UNLESS OTHERWISE SPECIFIED DIMENSIONS ARE IN INCHES. TOLERANCES ON: DECIMALS ±0.005(0.015) ANGLES ±1°	CONTRACT NO. DR Submittal 6-21-78 CHR J. Schellman 7-25-78	AMP INCORPORATED Harrisburg, Pa.
MATERIAL SEE TABLE	APP'D P. J. Schellman 3-8-78 APP'D P. J. Schellman 3-8-78	NAME SPADE
FINISH SEE TABLE	DSGN APP'D	SIZE B CODE IDENT NO 00779 DRAWING NO 60773
	OTHER APP'D	SCALE SHEET

- CONTINUOUS STRIP, ON REELS
 - DIMENSIONS IN BRACKETS ARE IN INCHES.
- △ SUFFIX LETTER MUST BE USED ONLY WHEN ORDERING APPLICATOR TOOLING.

METRIC

CUSTOMER DRAWING

AMP 1470-15 (7-73)