

4

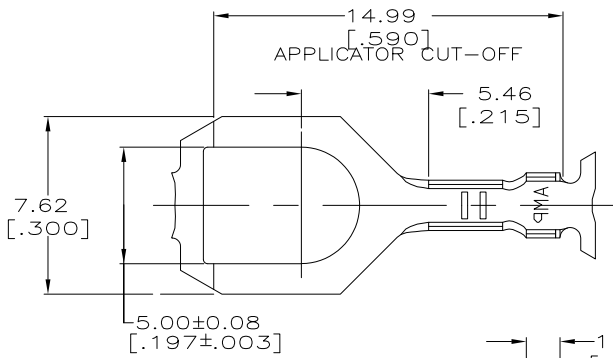
3

2

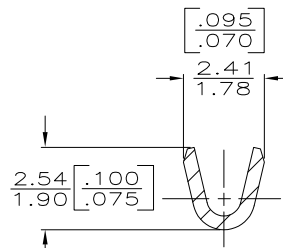
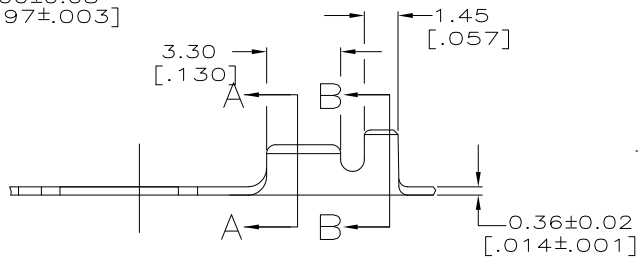
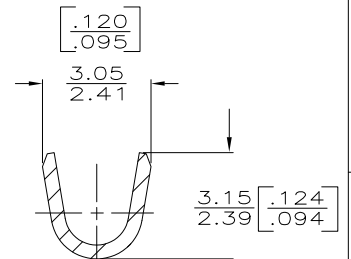
1

THIS DRAWING IS UNPUBLISHED. RELEASED FOR PUBLICATION  
 © COPYRIGHT BY TYCO ELECTRONICS CORPORATION. ALL INTERNATIONAL RIGHTS RESERVED.

LOC	DIST	REVISIONS				
P	LTR	DESCRIPTION	DATE	DWN	APVD	
AF	50	F	REVISED PER ECR-10-006099	07JUL10	HMR PD	



1. CONTINUOUS STRIP ON REELS

SECTION A-A  
SCALE 10:1SECTION B-B  
SCALE 10:1

# METRIC

1.22-1.98 [.048-.078]	0.2-0.6mm <sup>2</sup> [24-20]	60501-1
INSULATION RANGE	WIRE RANGE	PART NO

0	2.29 [.090]	4.83 [.190]	F	1.57 [.062]	1.17 [.046]	0.5mm [.20]	THIS DRAWING IS A CONTROLLED DOCUMENT.	DWN P. FORTNEY 1/29/90	Tyco Electronics Corporation Harrisburg, PA 17105-3608		
					1.09 [.043]	0.3mm [.22]		CHK MS. FEHER 1/31/90			
					1.02 [.040]	0.2mm [.24]		APVD G. YETTER 2/2/90			
TYPE	WIDTH	STRIP LENGTH ±.015	TYPE	WIDTH	±.051 [.002] HEIGHT	WIRE	DIMENSIONS: mm [INCHES]	TOLERANCES UNLESS OTHERWISE SPECIFIED: 0. PLC ± - 1. PLC ± - 2. PLC ± - 3. PLC ± 0.38 [.015] 4. PLC ± - ANGLES ± -	NAME		
INSUL BARREL CRIMP				WIRE BARREL CRIMP			MATERIAL 1/2 HARD BRASS	FINISH TIN	PRODUCT SPEC - APPLICATION SPEC - WEIGHT -		
								SIZE A3	CAGE CODE 00779	DRAWING NO 60501	RESTRICTED TO
								CUSTOMER DRAWING	SCALE 6:1	SHEET 1 OF 1	REV F

1470-19 (1/08)