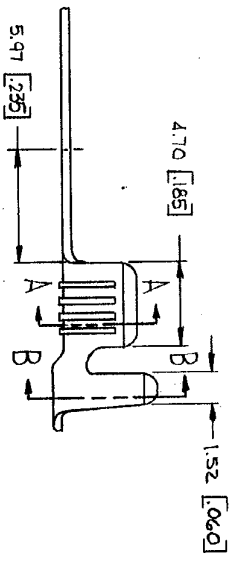
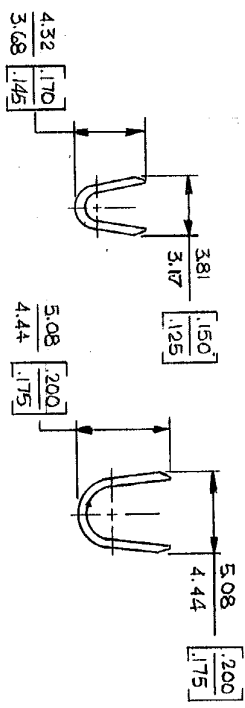
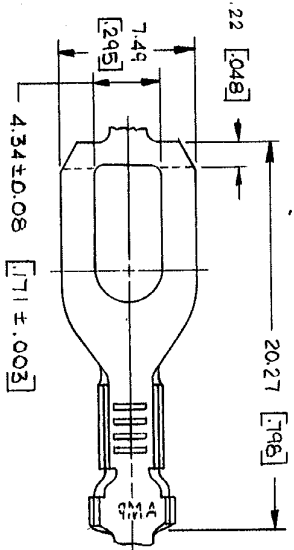
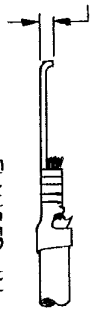


DRAWING MADE IN THIRD ANGLE PROJECTION

© COPYRIGHT 1964 BY AMP INCORPORATED, HARRISBURG, PA.
 ALL INTERNATIONAL RIGHTS RESERVED. AMP INCORPORATED PRODUCTS
 COVERED BY U. S. AND FOREIGN PATENTS AND/OR PATENTS PENDING.

REVISIONS		LOC	DIST
P	ZONE	A	F
D	REDRAWN & REVISED	6-20-78	DTB
E	ADDED - 3 TT1	9-5-79	PLS
F	OBSOLETED - 3 PER A-5348	4-15-82	RSF
G	INSUL SUPP LENGTH AF 0781	2-25-85	RSF
H	REVISED AF 1994	7/1/86	SS/RSF



STUD SIZE	WIRE RANGE	INSULATION RANGE	FINISH	MATERIAL	PART NO
M 4	0.8 - 2.0 mm ²	2.54 - 3.56	TIN	0.46 [018]	60774-3
# 8	[6-14]	[100 - .140]	NONE	BRASS	60774-2A
					60774-2
					60774-1A
					60774-1

UNLESS OTHERWISE SPECIFIED DIMENSIONS ARE IN INCHES. TOLERANCES ON: FRACTIONS ± 0.005 (0.05) DECIMALS ± 0.001 (0.01) ANGLES ± 0.01

CONTRACT NO. DR Dahlen 6-26-78

DESIGN APPD. CHKD. K. Allen 7-15-78

APPD. G. H. 8-8-78

OTHER APPD. G. H. 8-10-78

NAME SPADE

SIZE B

CODE IDENT NO 00779

DRAWING NO 60774

SHEET

AMP INCORPORATED Harrisburg, Pa.

AMP 1470-15 (7-73)

METRIC

CUSTOMER DRAWING

- CONTINUOUS STRIP ON REELS.
 - DIMENSIONS IN BRACKETS ARE IN INCHES.
- △ SUFFIX LETTER MUST BE USED ONLY WHEN ORDERING APPLICATOR TOOLING.