

4

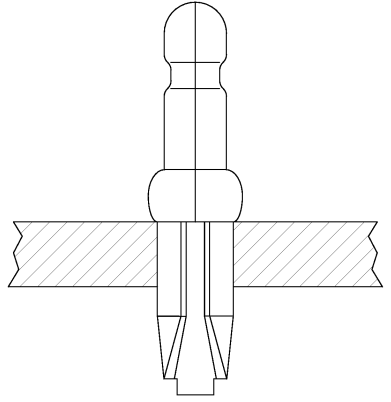
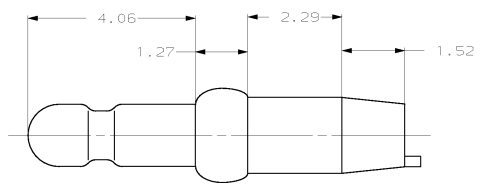
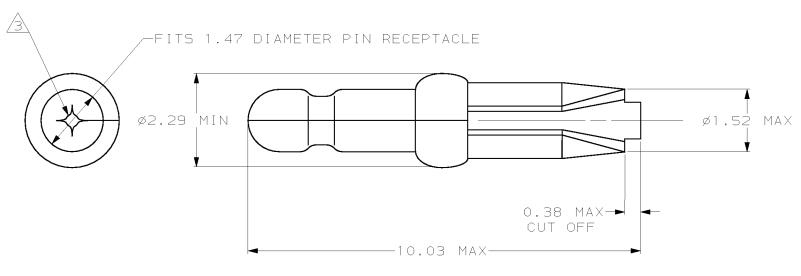
3

2

1

THIS DRAWING IS UNCLASSIFIED  
 (C) COPYRIGHT IS BY AMP INCORPORATED. ALL RIGHTS RESERVED.

REV	DATE	DESCRIPTION	DATE	BY	APP'D
CM	52				
AG		REV & REDWN PER EC DL30-0176-97	8-21-97	TB	RS



- FITS 1.68 - 1.78 DIAMETER HOLE IN A 1.57 OR 2.36 PRINTED CIRCUIT BOARD.
  - PARTS TO COMPLY WITH AMP SOLDERABILITY SPECIFICATION 109-11-3.
- △ 0.05 - 0.25 DIAMETER OPENING REQUIRED IN TIP OF PIN.

PRE TIN	6101B-1
FINISH	PART NUMBER

MM	IN	MM	IN	MM	IN	MM	IN
0.38	.015	1.57	.062	2.36	.093	-	-
0.25	.010	1.52	.060	2.29	.090	-	-
0.13	.005	1.47	.058	1.78	.070	10.03	.395
0.05	.002	1.27	.050	1.68	.065	4.06	.160

CONVERSION TABLE

METRIC

THIS DRAWING IS A CONTROLLED DOCUMENT

DESIGNER	MM	DATE	8-21-97
CHK	T. BECK	DATE	8-21-97
APP	SWING	DATE	9-10-97
PROJ	108-1025	APPROVAL	
APPL	114-1008	DATE	
MATERIAL	0.25 PH BRZ	FINISH	SEE TABLE
PRICE		CUSTOMER DRAWING	

AMP Incorporated  
 Harrisburg, PA 17105-3608

PIN, .058 DIAMETER,  
 PHOSPHER BRONZE, PRESS FIT,  
 LOOSE PIECE, P.C. CONTACT

SCALE: 15:1 SHEET 1 OF 1 REV AG

AMP 1471-9 REV 27/06/96  
 21-AUG-97 09:00:33 amp22238 /home/amp22238/junk/redraw.sfp