

4

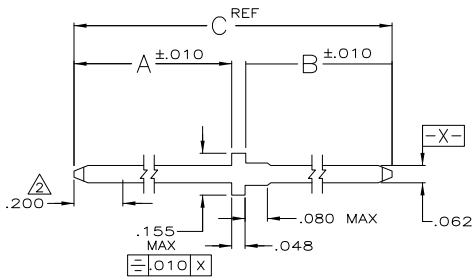
3

2

1

THIS DRAWING IS UNPUBLISHED. RELEASED FOR PUBLICATION
 © COPYRIGHT BY TYCO ELECTRONICS CORPORATION. ALL RIGHTS RESERVED.

LOC	DIST	REVISIONS			
P	LTR	DESCRIPTION	DATE	BY	APPD
A		ECO-04-00997	02MAY2008	RB	NE
A1		REVISED PER ECO-09-024927	09NOV09	KK	AEQ



1. THIS POST IS NOT COMPATIBLE WITH TERMI-POINT APPLICATIONS.
- △ POINT OF MEASUREMENT FOR PLATING THICKNESS.
- △ .000100-.000200 MATTE TIN OVER .000030 NICKEL.
4. ROHS 2002/95/EC COMPLIANT.
- △ OBSOLETE PARTS: OBSOLETE CIS STREAMLINING PER D.RENAUD/D.SINISI

△ OBSOLETE	.573	.125	.400	△	2-5086182-5
	.715	.187	.480	△	2-5086182-2
	.998	.150	.800	△	1-5086182-0
△	.748	.320	.380	△	5086182-9
	.595	.187	.360	△	5086182-2
	.800	.187	.565	△	5086182-1

C	B	A	FINISH	PART NUMBER
---	---	---	--------	-------------

THIS DRAWING IS A CONTROLLED DOCUMENT.

DR: R. BROWN	02MAY2008	Tyco Electronics Corporation Harrisburg, PA 17105-3608	
CHK: N. EPPLEY	02MAY2008		
APPD: N. EPPLEY	02MAY2008	NAME	
PRODUCT SPEC		CONTACT, MALE, MOD I LOOSE PIECE .031X.062	
APPLICATION SPEC		SIZE	
WEIGHT		CAGE CODE	
MATERIAL: BRASS	FINISH: NOTE 3	DRAWING NO: A200779	RESTRICTED TO: -
CUSTOMER DRAWING		SCALE: 4:1	SHEET: 1 of 1

AMP 1471-9 REV 31MM2000

5086182

A